



WAAS CH 40401 W35A	APP CRS 356°	Rwy Ldg TDZE 575 Apt Elev 607
--	------------------------	---

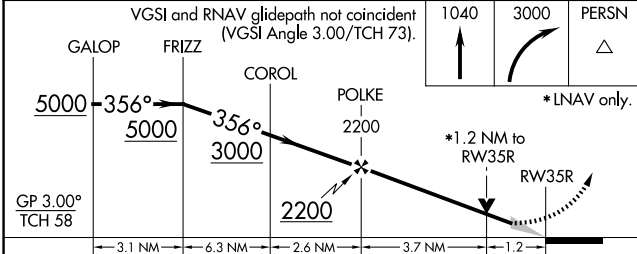
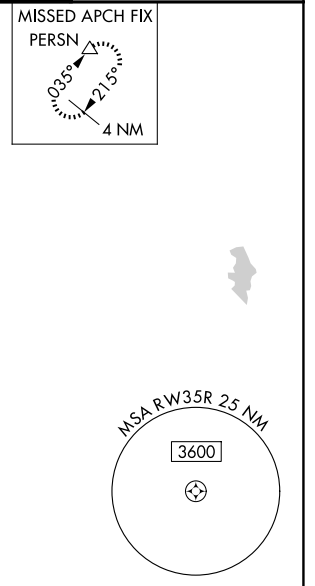
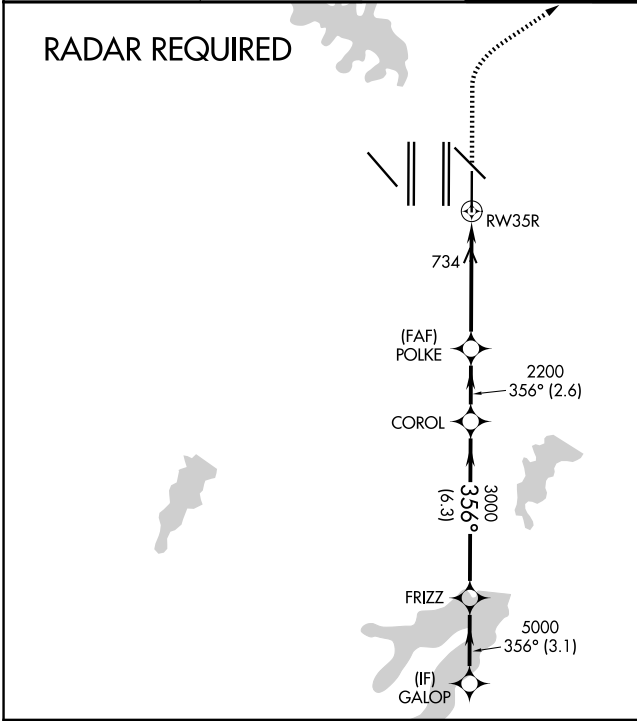
RNAV (GPS) RWY 35R

DALLAS-FORT WORTH INTL (DFW)

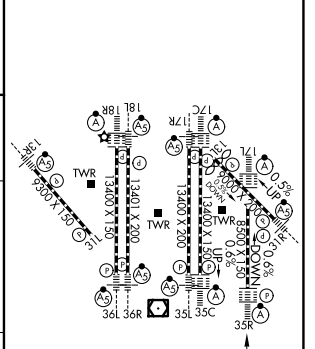
▼ For uncompensated Baro-VNAV systems, LNAV/VNAV NA below -4°C (25°F) or above 54°C (130°F). For inop ALSF, increase LNAV/VNAV all Cats visibility to RVR 6000, increase LNAV Cat C/D visibility to 1 $\frac{1}{8}$ mile. Simultaneous approach authorized with Rwy 35 L/C and 36L/R. DME/DME RNP-0.3 NA. LNAV procedure NA during simultaneous operations. Use of FD or AP providing RNAV track guidance required during simultaneous operations.

ALSF-2

MISSED APPROACH FIX
PERSN


D-ATIS 123.775	LONE STAR APP CON 119.4	DFW TOWER 126.55 127.5 (E) 124.15 134.9 (W)	GND CON 121.65 121.8 (E) 121.85 (W)
--------------------------	-----------------------------------	---	---



ELEV 607	D TDZE 575
----------	-------------------



CATEGORY	A	B	C	D
LPV DA		775/18	200 (200- $\frac{1}{2}$)	
LNAV/VNAV DA		917/30	342 (400- $\frac{5}{8}$)	
LNAV MDA	1040/24	465 (500- $\frac{1}{2}$)	1040/50	465 (500-1)

HIRL all Rwys
REIL Rwys 13L and 31L
TDZL/RCLS all Rwys except 13L and 31L

SC-2, 16 APR 2026 to 14 MAY 2026

SC-2, 16 APR 2026 to 14 MAY 2026