

| | | |
|--|------------------------|--|
| WAAS CH 93805 W36B | APP CRS 356° | Rwy Ldg 13400 TDZE 588 Apt Elev 607 |
|--|------------------------|--|

RNAV (GPS) RWY 36L

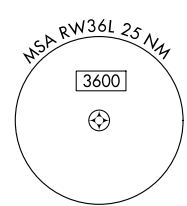
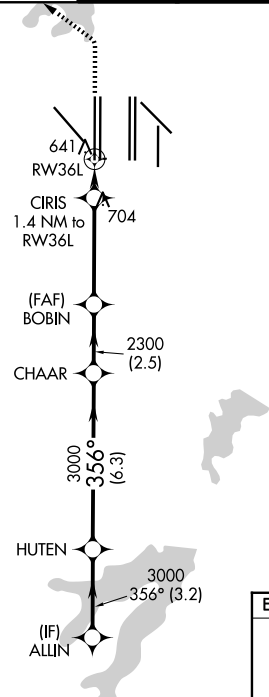
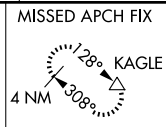
DALLAS-FORT WORTH INTL (DFW)

▼ For uncompensated Baro-VNAV systems, LNAV/VNAV NA below -4°C (25°F) or above 54°C (130°F). For inop MALSR, increase LNAV Cat C/D visibility to RVR 5500. Simultaneous approach authorized with Rwy 35L/C/R. DME/DME RNP-0.3 NA. LNAV procedure NA during simultaneous operations. Use of FD or AP providing RNAV track guidance required during simultaneous operations.



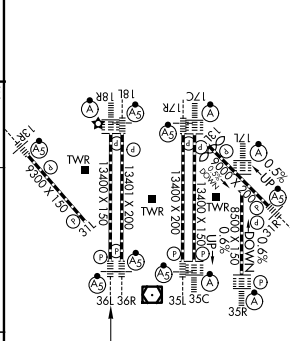
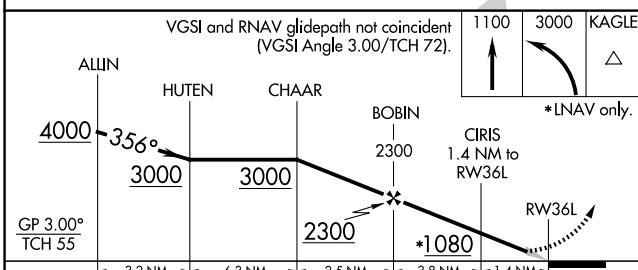
MISSED APPROACH: Climb to 1100 then climbing left turn to 3000 direct KAGLE and hold.

| | | | |
|--------------------------|-------------------------------------|---|---|
| D-ATIS 123.775 | LONE STAR APP CON 118.425 | DFW TOWER 126.55 127.5 (E) 124.15 134.9 (W) | GND CON 121.65 121.8 (E) 121.85 (W) |
|--------------------------|-------------------------------------|---|---|



RADAR REQUIRED

| | | |
|----------|----------|----------|
| ELEV 607 | D | TDZE 588 |
|----------|----------|----------|



| CATEGORY | A | B | C | D |
|--------------|--------|---------------|---------------|---------------|
| LPV DA | | 788/18 | 200 (200-1/2) | |
| LNAV/VNAV DA | | 987/45 | 399 (400-7/8) | |
| LNAV MDA | 960/24 | 372 (400-1/2) | 960/35 | 372 (400-5/8) |

HIRL all Rwys
REIL Rwys 13L and 31L
TDZL/RCLS all Rwys except 13L and 31L

SC-2, 16 APR 2026 to 14 MAY 2026

SC-2, 16 APR 2026 to 14 MAY 2026