

WAAS CH <b>87005</b> <b>W36A</b>	APP CRS <b>356°</b>	Rwy Ldg <b>13401</b> TDZE <b>581</b> Apt Elev <b>607</b>
--	------------------------	--

# RNAV (GPS) RWY 36R

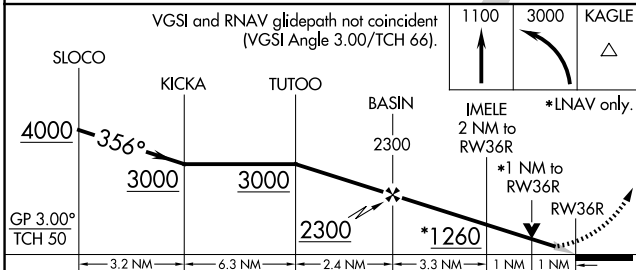
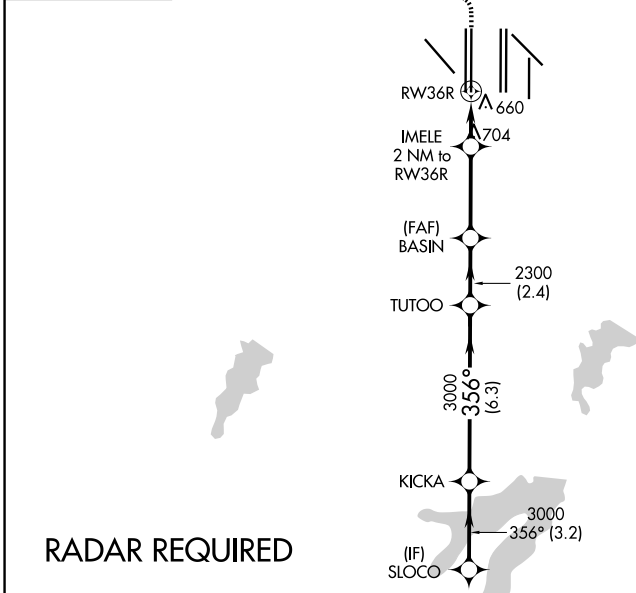
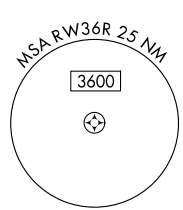
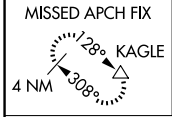
DALLAS-FORT WORTH INTL (DFW)

**▼** For uncompensated Baro-VNAV systems, LNAV/VNAV NA below -4°C (25°F) or above 54°C (130°F). For inop MALSRS, increase LNAV Cats C/D visibility to RVR 5500. Simultaneous approach authorized with Rwy 35L/C/R. DME/DME RNP-0.3 NA. LNAV procedure NA during simultaneous operations. Use of FD or AP providing RNAV track guidance required during simultaneous operations.

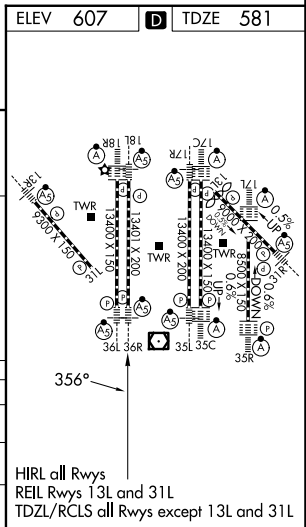
**MALSRS**

**MISSED APPROACH:** Climb to 1100 then climbing left turn to 3000 direct KAGLE and hold.

D-ATIS <b>123.775</b>	LONE STAR APP CON <b>118.425</b>	DFW TOWER <b>126.55 127.5 (E)</b> <b>124.15 134.9 (W)</b>	GND CON <b>121.65 121.8 (E)</b> <b>121.85 (W)</b>
--------------------------	-------------------------------------	---	---



CATEGORY	A	B	C	D
LPV DA		781/18	200 (200-½)	
LNAV/VNAV DA		941/40	360 (400-¾)	
LNAV MDA	960/24	379 (400-½)	960/35	379 (400-⅝)



SC-2, 16 APR 2026 to 14 MAY 2026

SC-2, 16 APR 2026 to 14 MAY 2026