

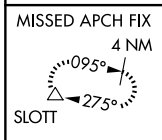
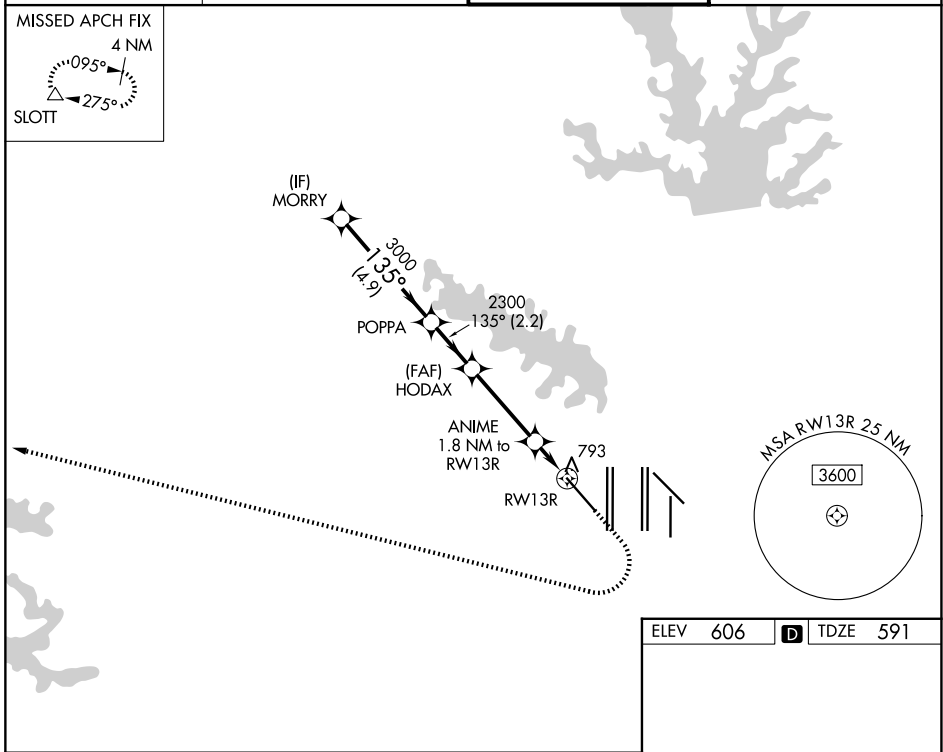
WAAS CH 72742 W13A	APP CRS 135°	Rwy Ldg 9300 TDZE 591 Apt Elev 606
--	------------------------	---

RNAV (GPS) Y RWY 13R

DALLAS-FORT WORTH INTL (DFW)

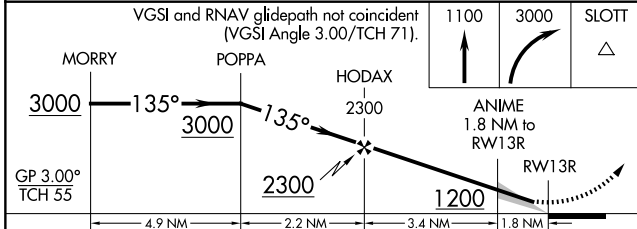
RNP APCH - GPS. ▼ For uncompensated Baro-VNAV systems, LNAV/VNAV NA below -8° C or above 54° C. For inop ALS, increase LNAV/VNAV all Cats visibility to RVR 6000 and LNAV Cat C/D visibility to 1½ SM.	MALSRS 	MISSED APPROACH: Climb to 1100 then climbing right turn to 3000 direct SLOTT and hold.
---	------------	--

D-ATIS 123.775	LONE STAR APP CON 133.15 118.1	DFW TOWER 126.55 127.5 (E) 124.15 134.9 (W)	GND CON 121.65 121.8 (E) 121.85 (W)
--------------------------	--	---	---



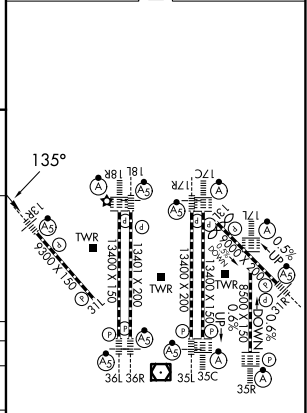
SC-2, 16 APR 2026 to 14 MAY 2026

SC-2, 16 APR 2026 to 14 MAY 2026



CATEGORY	A	B	C	D
LPV DA		791/18	200 (200-½)	
LNAV/VNAV DA		991/35	400 (400-¾)	
LNAV MDA	1080/24	489 (500-½)	1080/50	489 (500-1)

ELEV 606	D TDZE 591
----------	-------------------



HIRL all Rwys
REIL Rwys 13L and 31L
TDZL/RCLS all Rwys except 13L and 31L