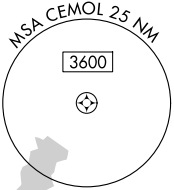
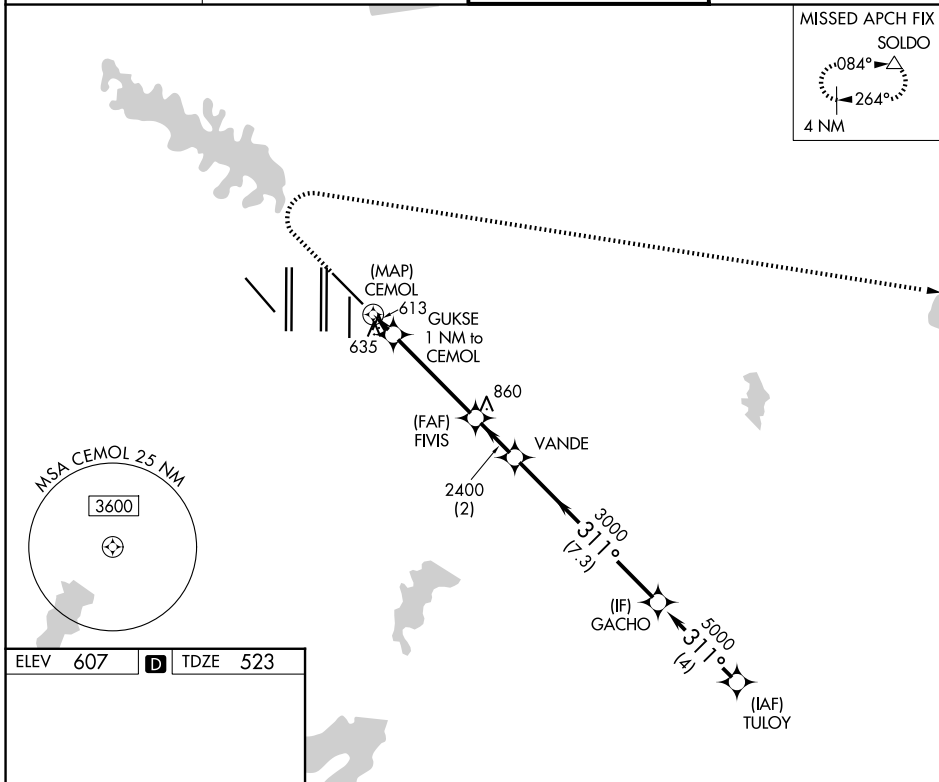
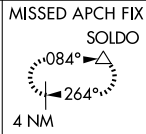


WAAS CH <b>90342</b> <b>W31B</b>	APP CRS <b>311°</b>	Rwy Ldg <b>8373</b> TDZE <b>523</b> Apt Elev <b>607</b>
--	------------------------	---

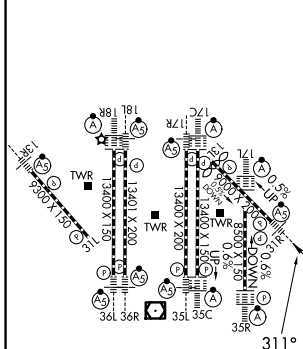
# RNAV (GPS) Y RWY 31R

DALLAS-FORT WORTH INTL (DFW)

RNP APCH. ▼ For inop ALS, increase LP Cat C/D visibility to RVR 5500 and LNAV Cat C/D visibility to RVR 6000.		MAISR 	MISSED APPROACH: Climb to 1000 then climbing right turn to 3000 direct SOLDO and hold.
D-ATIS <b>123.775</b>	LONE STAR APP CON <b>135.5 125.2</b>	DFW TOWER <b>126.55 127.5 (E)</b> <b>124.15 134.9 (W)</b>	GND CON <b>121.65 121.8 (E)</b> <b>121.85 (W)</b>



ELEV 607	<b>D</b>	TDZE 523
----------	----------	----------



1000	3000	SOLDO	VGSI and descent angles not coincident (VGSI Angle 3.00/TCH 69).						
GUKSE 1 NM to CEMOL		FVIVIS	VANDE	GACHO	TULYO				
CEMOL	1060	2400	3000	5000	5000				
3.00° TCH 53'									
0.6		4.2 NM		2 NM		7.3 NM		4 NM	
CATEGORY	A		B		C		D		
LP MDA	880/24 357 (300-½)		880/30 357 (300-¾)		880/30 357 (300-¾)		880/30 357 (300-¾)		
LNAV MDA	940/24 417 (400-½)		940/40 417 (400-¾)		940/40 417 (400-¾)		940/40 417 (400-¾)		

HIRL all Rwys  
REIL Rwys 13L and 31L  
TDZL/RCLS all Rwys except 13L and 31L

SC-2, 16 APR 2026 to 14 MAY 2026

SC-2, 16 APR 2026 to 14 MAY 2026