

(GREGS.SHAAM2) 24305

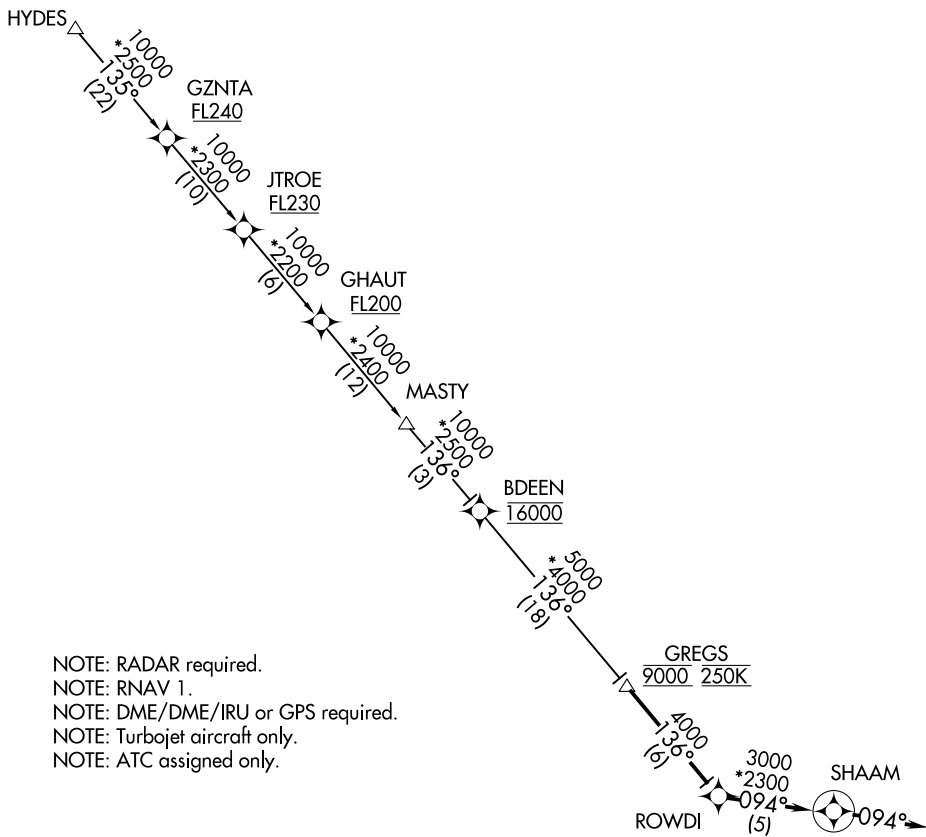
# SHAAM TWO ARRIVAL (RNAV)

AL-6039 (FAA)

DALLAS-FORT WORTH INTL (DFW)

DALLAS-FORT WORTH, TEXAS

LONE STAR APP CON  
119.875 284.65  
D-ATIS  
123.775



- NOTE: RADAR required.
- NOTE: RNAV 1.
- NOTE: DME/DME/IRU or GPS required.
- NOTE: Turbojet aircraft only.
- NOTE: ATC assigned only.

NOTE: Chart not to scale.

## ARRIVAL ROUTE DESCRIPTION

GZNTA TRANSITION (GZNTA.SHAAM2)  
HYDES TRANSITION (HYDES.SHAAM2)

From GREGS on track 136° to ROWDI, then on track 094° to SHAAM, then on track 094°. Expect RADAR vectors to final approach course.

**SHAAM TWO ARRIVAL (RNAV)**  
(GREGS.SHAAM2) 25JUN15

DALLAS-FORT WORTH, TEXAS  
DALLAS-FORT WORTH INTL (DFW)

SC-2, 16 APR 2026 to 14 MAY 2026

SC-2, 16 APR 2026 to 14 MAY 2026