

WILBR ONE ARRIVAL  
(WILBR: WILBR1) 27NOV25

Transition Routes

DALLAS-FORT WORTH, TEXAS  
DALLAS-FORT WORTH INTL (DFW)

LONE STAR APP CON  
125.025 263.025  
D-ATIS ARR  
123.775

ARDMORE  
116.7 ADM  
Chan 114

NOTE: RADAR required.  
NOTE: DME required.

BONHAM  
114.6 BYP  
Chan 93

Parachute Jumping Area for  
Trenton, Tri-County Air Estates

See following page  
for arrival routes.

TULSA  
114.4 TUL  
Chan 91

FORT SMITH  
110.4 FSM  
Chan 41

LITTLE ROCK  
115.1 LIT  
Chan 98

RICH MOUNTAIN  
113.5 PGO  
Chan 82

TEXARKANA  
116.3 TXK  
Chan 110

EL DORADO  
115.5 ELD  
Chan 102

PARIS  
113.6 PRX  
Chan 83

GREGG COUNTY  
112.9 GGG  
Chan 76

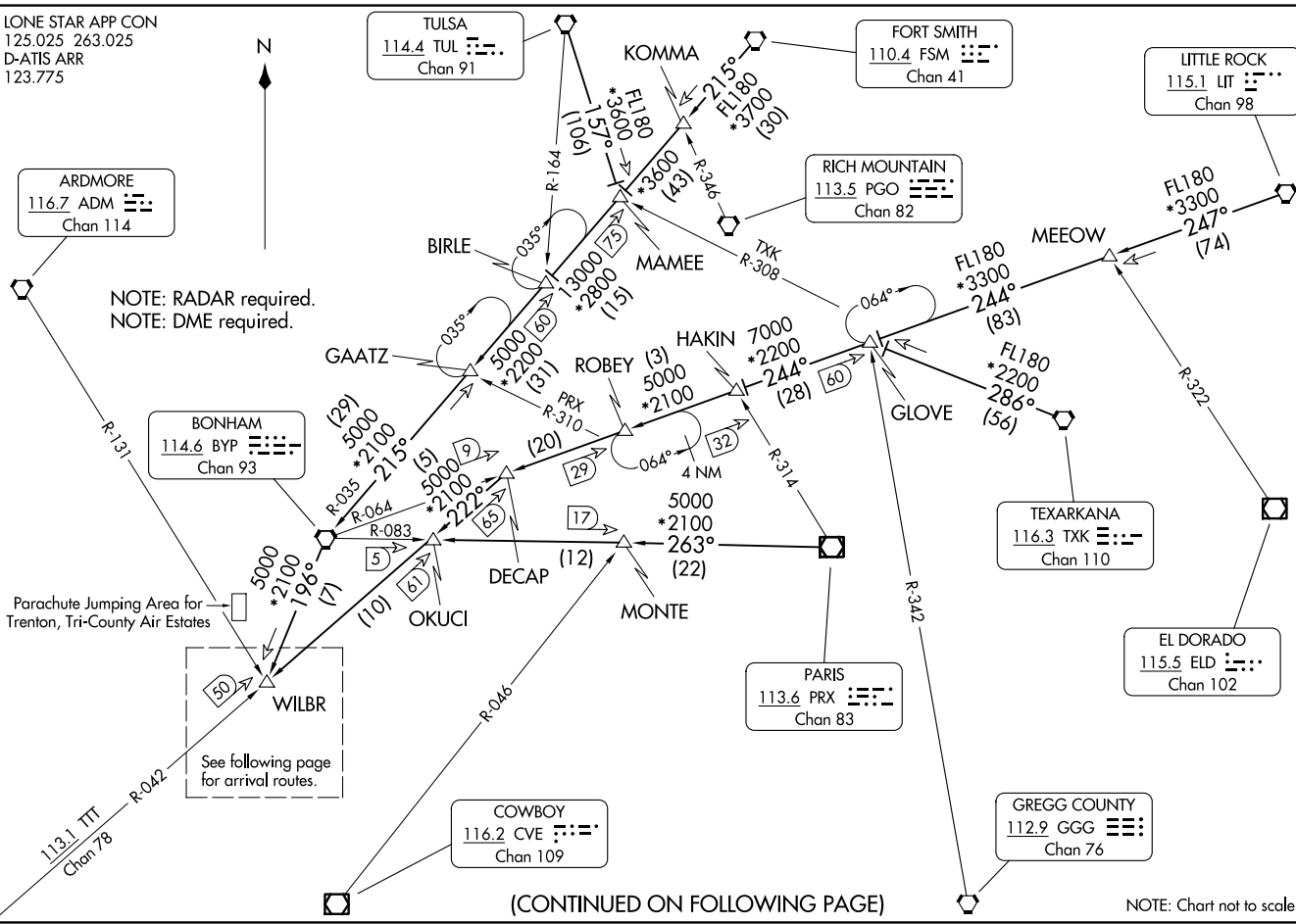
COWBOY  
116.2 CVE  
Chan 109

WILBR ONE ARRIVAL  
(WILBR: WILBR1) 25331

Transition Routes

DALLAS-FORT WORTH INTL (DFW)  
DALLAS-FORT WORTH, TEXAS

AL-6039 (FAA)



(CONTINUED ON FOLLOWING PAGE)

NOTE: Chart not to scale.

WILBR ONE ARRIVAL  
(WILBR, WILBR1) 27NOV25

Arrival Routes

DALLAS-FORT WORTH, TEXAS  
DALLAS-FORT WORTH INTL (DFW)

LONE STAR APP CON  
125.025 263.025  
D-ATIS ARR  
123.775

NOTE: RADAR required.  
NOTE: DME required.

ARDMORE  
116.7 ADM  
Chan 114

BOWIE  
117.15 UKW  
Chan 118(Y)

MAVERICK  
113.1 TTT  
Chan 78

Parachute Jumping Area  
for Trenton, Tri-County Air Estates

WILBR

KNACK

PERSN  
JET LANDING NORTH:  
270K

FUNKY  
JET LANDING NORTH:  
Expect 11000 240K

TOWNN  
JET LANDING NORTH:  
Expect 11000 210K

BRDJE  
JET LANDING NORTH:  
280K  
JET LANDING SOUTH:  
Expect 11000 250K

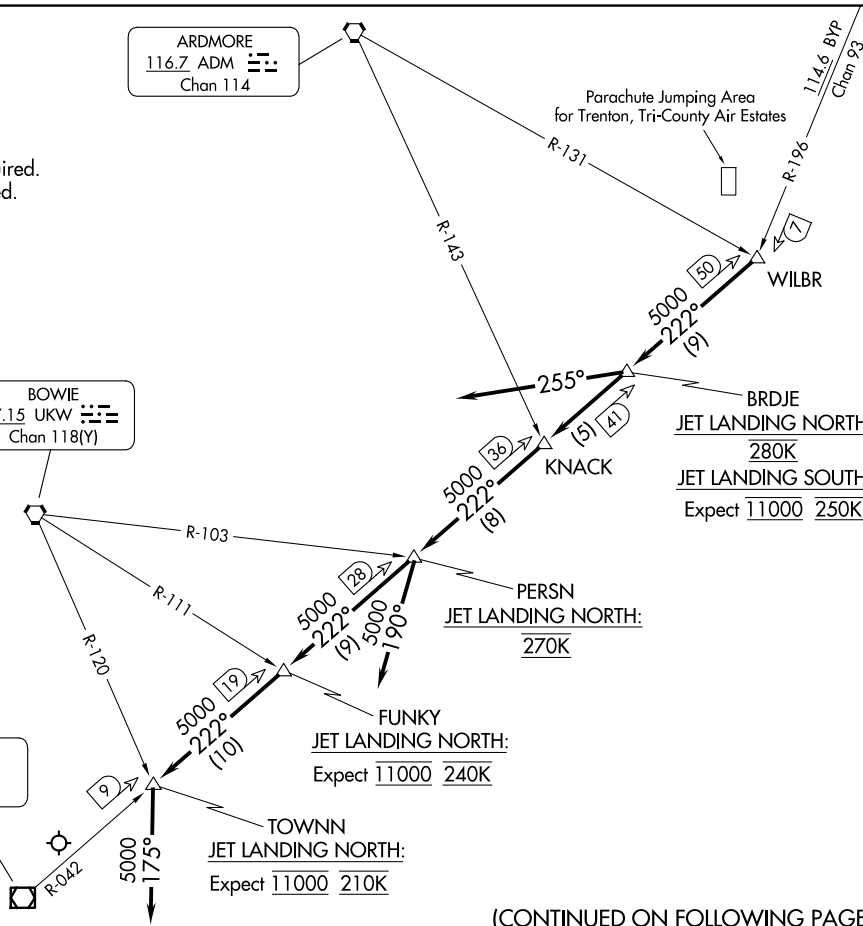
NOTE: Chart not to scale.

(CONTINUED ON FOLLOWING PAGE)

(WILBR, WILBR1) 25331  
WILBR ONE ARRIVAL

Arrival Routes  
AL-6039 (FAA)

DALLAS-FORT WORTH INTL (DFW)  
DALLAS-FORT WORTH, TEXAS



# WILBR ONE ARRIVAL

## ARRIVAL ROUTE DESCRIPTION

BONHAM TRANSITION (BYP.WILBR1): From over BYP VORTAC on BYP R-196 to WILBR. Thence. . .

FORT SMITH TRANSITION (FSM.WILBR1): From over FSM VORTAC on FSM R-215 to MAMEE, then on BYP R-035 to BYP VORTAC, then on BYP R-196 to WILBR. Thence. . .

LITTLE ROCK TRANSITION (LIT.WILBR1): From over LIT VORTAC on LIT R-247 to MEEOW, then on BYP R-064 to DECAP, then on TTT R-042 to WILBR. Thence. . .

PARIS TRANSITION (PRX.WILBR1): From over PRX VOR/DME on PRX R-263 and BYP R-083 to MONTE, then on BYP R-083 to OKUCI, then on TTT R-042 to WILBR. Thence. . .

TEXARKANA TRANSITION (TXK.WILBR1): From over TXK VORTAC on TXK R-286 to GLOVE, then on BYP R-064 to DECAP, then on TTT R-042 to WILBR. Thence. . .

TULSA TRANSITION (TUL.WILBR1): From over TUL VORTAC on TUL R-157 to MAMEE, then on BYP R-035 to BYP VORTAC, then on BYP R-196 to WILBR. Thence. . .

. . .from over WILBR on TTT R-042. . .

ALL AIRCRAFT LANDING SOUTH: To BRDJE depart heading 255°, expect RADAR vectors for base leg.

JETS LANDING NORTH: To BRDJE, to KNACK, to PERSN, to FUNKY, to TOWNN, then depart heading 175°, expect RADAR vectors.

PROP AIRCRAFT LANDING NORTH: To BRDJE, to KNACK, to PERSN, then depart heading 190°, expect RADAR vectors.

SC-2, 16 APR 2026 to 14 MAY 2026

SC-2, 16 APR 2026 to 14 MAY 2026