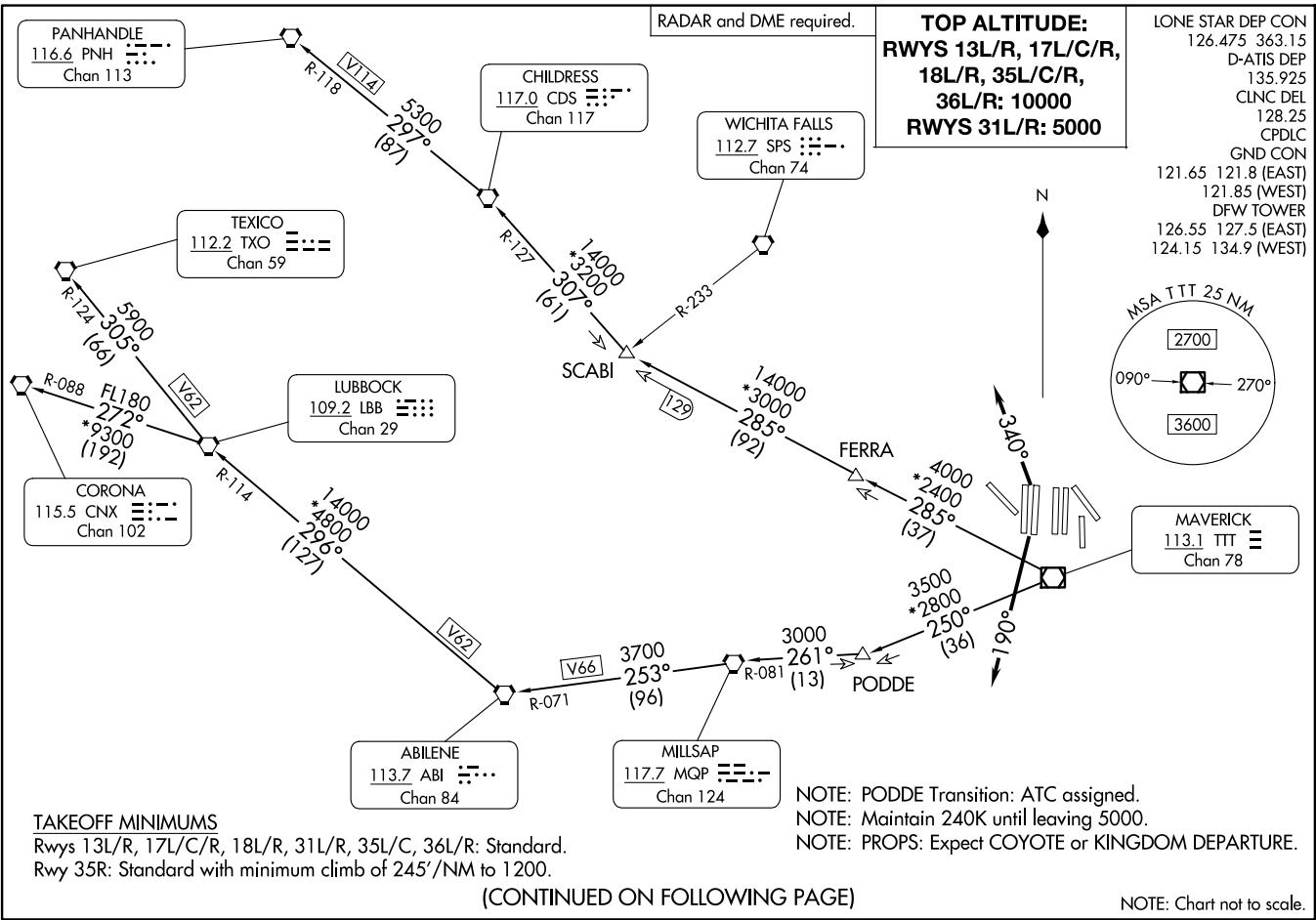


WORTH ONE DEPARTURE
(WORTH1.TTT) 251ANZ4

DALLAS-FORT WORTH, TEXAS
DALLAS-FORT WORTH INTL (DFW)



TAKEOFF MINIMUMS

Rwys 13L/R, 17L/C/R, 18L/R, 31L/R, 35L/C, 36L/R: Standard.
Rwy 35R: Standard with minimum climb of 245'/NM to 1200.

NOTE: PODDE Transition: ATC assigned.
NOTE: Maintain 240K until leaving 5000.
NOTE: PROPS: Expect COYOTE or KINGDOM DEPARTURE.

(CONTINUED ON FOLLOWING PAGE)

NOTE: Chart not to scale.

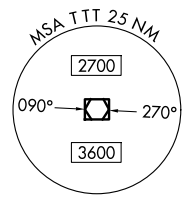
(WORTH1.TTT) 24305
WORTH ONE DEPARTURE

AL-6039 (FAA)

DALLAS-FORT WORTH INTL (DFW)
DALLAS-FORT WORTH, TEXAS

TOP ALTITUDE:
RWYS 13L/R, 17L/C/R,
18L/R, 35L/C/R,
36L/R: 10000
RWYS 31L/R: 5000

LONE STAR DEP CON 126.475 363.15
D-ATIS DEP 135.925
CLNC DEL 128.25
CPDLC
GND CON 121.65 121.8 (EAST)
121.85 (WEST)
DFW TOWER 126.55 127.5 (EAST)
124.15 134.9 (WEST)



RADAR and DME required.

WORTH ONE DEPARTURE



DEPARTURE ROUTE DESCRIPTION

TAKEOFF RUNWAYS 13L/R, 17L/C/R, 35L/C/R: Climb on assigned heading thence. . . .

TAKEOFF RUNWAYS 18L/R: Climb on heading 190°, thence. . . .

TAKEOFF RUNWAYS 36L/R: Climb on heading 340°, thence. . . .

. . . .for RADAR vectors to appropriate route, maintain 10000 and expect filed altitude 10 minutes after departure.

TAKEOFF RUNWAYS 31L/R: Climb on assigned heading and altitude, thence. . . .

. . . .for RADAR vectors to appropriate route, maintain 5000 and expect filed altitude 10 minutes after departure.

ABILENE TRANSITION (WORTH1.ABI): From over TTT VOR/DME on TTT R-250 to PODDE, then on MQP R-081 to MQP VORTAC, then on MQP R-253 and ABI R-071 to ABI VORTAC.

CHILDRESS TRANSITION (WORTH1.CDS): From over TTT VOR/DME on TTT R-285 to SCABI, then on CDS R-127 to CDS VORTAC.

CORONA TRANSITION (WORTH1.CNX): From over TTT VOR/DME on TTT R-250 to PODDE, then on MQP R-081 to MQP VORTAC, then on MQP R-253 and ABI R-071 to ABI VORTAC, then on ABI R-296 and LBB R-114 to LBB VORTAC, then on LBB R-272 and CNX R-088 to CNX VORTAC.

LUBBOCK TRANSITION (WORTH1.LBB): From over TTT VOR/DME on TTT R-250 to PODDE, then on MQP R-081 to MQP VORTAC, then on MQP R-253 and ABI R-071 to ABI VORTAC, then on ABI R-296 and LBB R-114 to LBB VORTAC.

PANHANDLE TRANSITION (WORTH1.PNH): From over TTT VOR/DME on TTT R-285 to SCABI, then on CDS R-127 to CDS VORTAC, then on CDS R-297 and PNH R-118 to PNH VORTAC.

PODDE TRANSITION (WORTH1.PODDE): From over TTT VOR/DME on TTT R-250 to PODDE.

TEXICO TRANSITION (WORTH1.TXO): From over TTT VOR/DME on TTT R-250 to PODDE, then on MQP R-081 to MQP VORTAC, then on MQP R-253 and ABI R-071 to ABI VORTAC, then on ABI R-296 and LBB R-114 to LBB VORTAC, then on LBB R-305 and TXO R-124 to TXO VORTAC.

SC-2, 16 APR 2026 to 14 MAY 2026

SC-2, 16 APR 2026 to 14 MAY 2026

WORTH ONE DEPARTURE