

NDB UWL 385	APP CRS 087°	Rwy Ldg TDZE Apt Elev	4201 1089 1090
-----------------------	------------------------	-----------------------------	---

NDB RWY 10

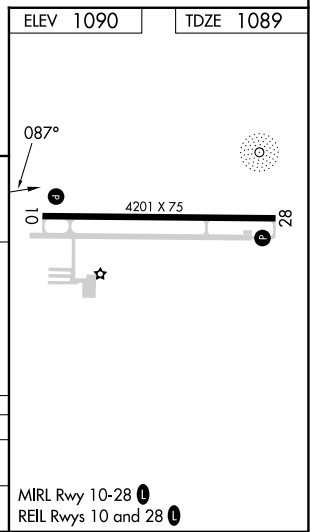
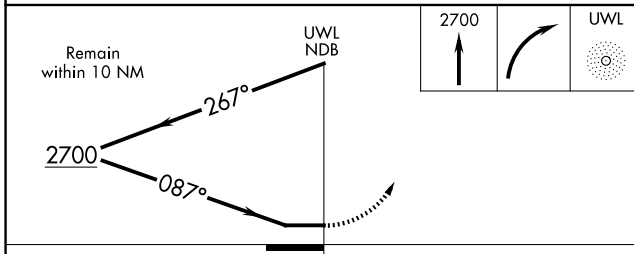
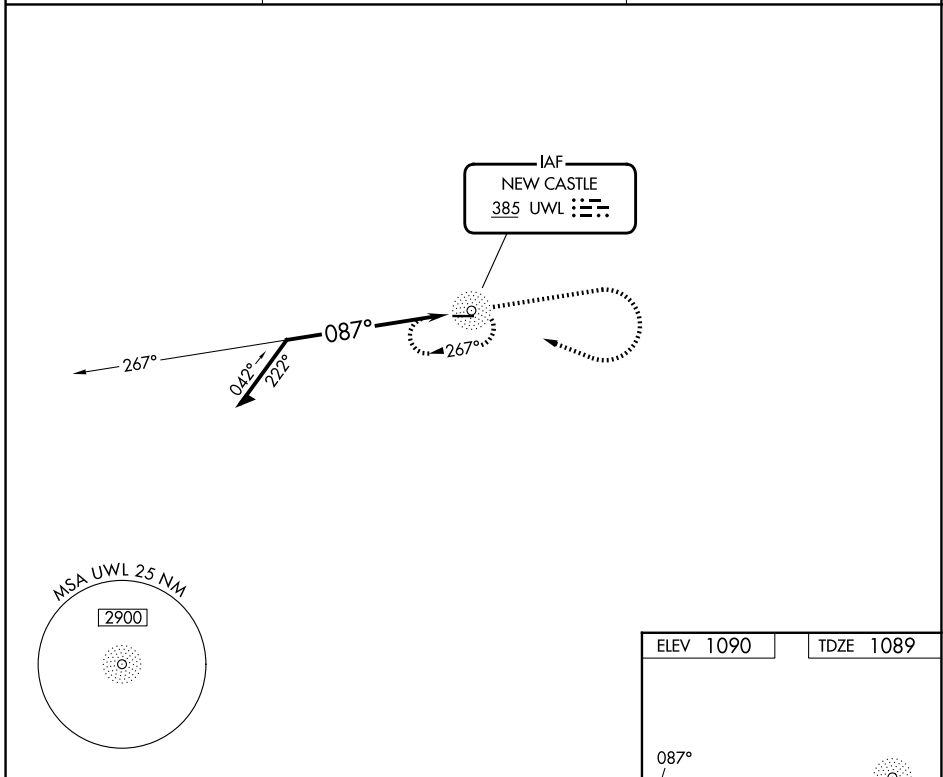
NEW CASTLE HENRY COUNTY MARLATT FLD (UWL)

RADAR required for procedure entry.

▼ Rwy 10 helicopter visibility reduction below 3/4 SM NA. When local altimeter setting not received, use Anderson altimeter setting and increase all MDAs 80 feet, 5-10 visibility Cat C/D 1/2 SM, and Circling visibility Cat C/D 1/4 SM.

MISSED APPROACH: Climb to 2700 then right turn direct UWL NDB and hold.

AWOS-3 132.375	INDIANAPOLIS APP CON 135.45 317.8	UNICOM 123.05 (CTAF) 0
--------------------------	---	----------------------------------



CATEGORY	A	B	C	D
S-10	1680-1	591 (600-1)	1680-1 3/4	591 (600-1 3/4)
CIRCLING	1680-1	590 (600-1)	1720-1 3/4	1720-2
			630 (700-1 3/4)	630 (700-2)

NDB RWY 10

EC-2, 16 APR 2026 to 14 MAY 2026

EC-2, 16 APR 2026 to 14 MAY 2026