

| | | | |
|--|------------------------|---|-------------|
| WAAS CH 97630 W23A | APP CRS 234° | Rwy Ldg TDZE 969 Apt Elev 977 | 3520 |
|--|------------------------|---|-------------|

RNAV (GPS) RWY 23

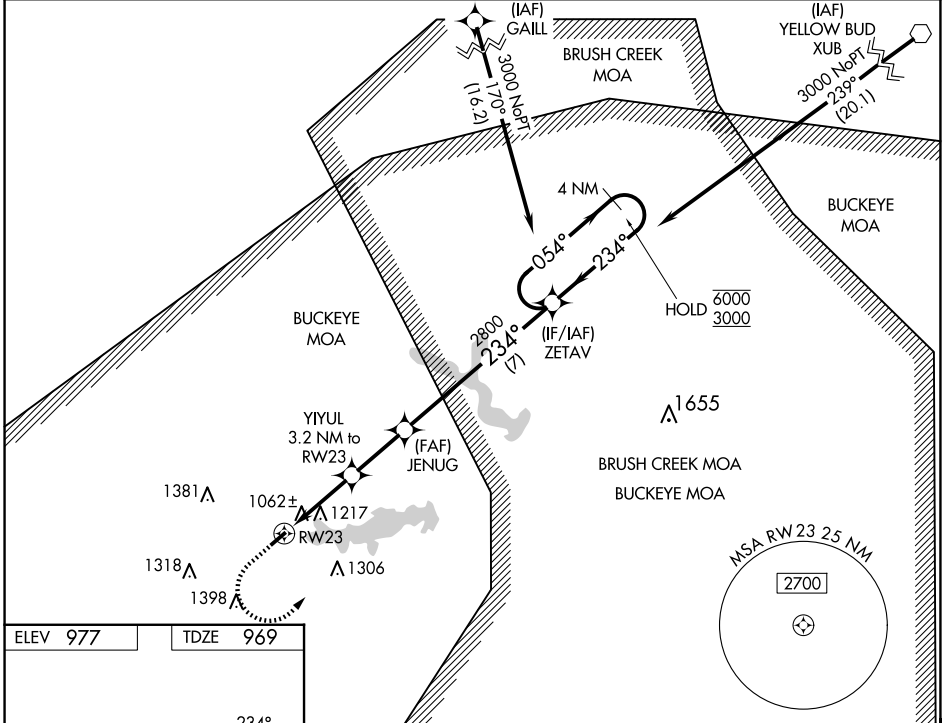
HIGHLAND COUNTY (HOC)

RNP APCH - GPS.

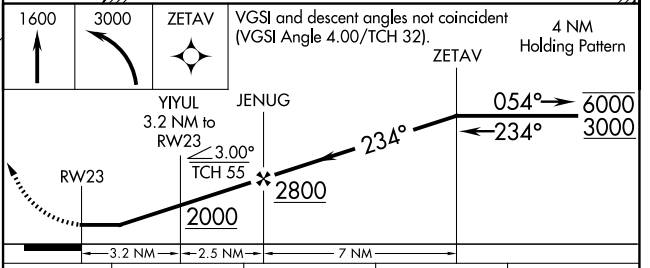
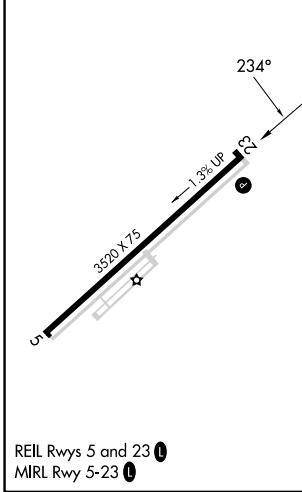
NA Procedure NA at night. Rwy 23 helicopter visibility reduction below 1 SM NA. When local altimeter setting not received, use Wilmington Air Park altimeter setting: increase all MDA 60 feet; increase LNAV Cats C and D visibility $\frac{1}{4}$ SM, increase LP Cats C and D visibility $\frac{1}{8}$ SM, and increase Circling Cats C and D visibility $\frac{1}{4}$ SM.

MISSED APPROACH: Climb to 1600 then climbing left turn to 3000 direct ZETAV and hold.

| | | |
|--------------------------|---|--------------------------------|
| AWOS-3 118.175 | INDIANAPOLIS CENTER 135.575 290.5 | UNICOM 123.05 (CTAF) |
|--------------------------|---|--------------------------------|



| | |
|----------|----------|
| ELEV 977 | TDZE 969 |
|----------|----------|



| CATEGORY | A | B | C | D |
|----------|-----------------------|-----------------------|-----------------------|--|
| LP MDA | 1320-1 351 (400-1) | | | |
| LNAV MDA | 1480-1 | 511 (600-1) | 1480-1 $\frac{3}{8}$ | 511 (600-1 $\frac{3}{8}$) |
| CIRCLING | 1500-1 523 (600-1) | 1520-1 543 (600-1) | 1700-2 723 (800-2) | 1700-2 $\frac{1}{4}$ 723 (800-2 $\frac{1}{4}$) |

REIL Rwy 5 and 23 **1**
MIRL Rwy 5-23 **1**

EC-2, 16 APR 2026 to 14 MAY 2026

EC-2, 16 APR 2026 to 14 MAY 2026