

APP CRS	Rwy Ldg	5097
220°	TDZE	979
	Apt Elev	980

RNAV (GPS) RWY 23

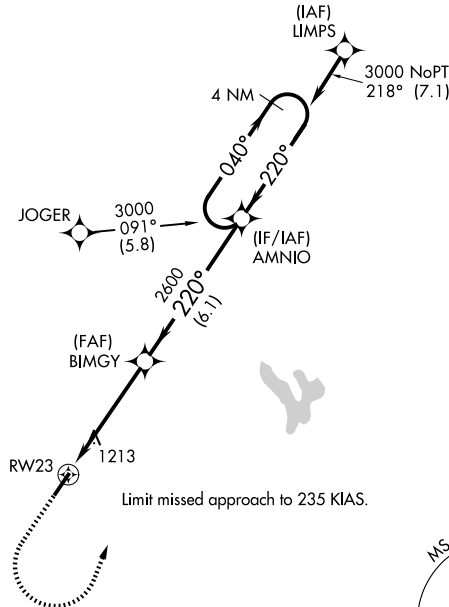
FAYETTE COUNTY (I23)

RNP APCH - GPS.

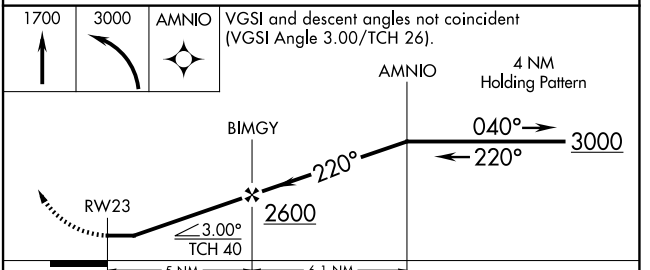
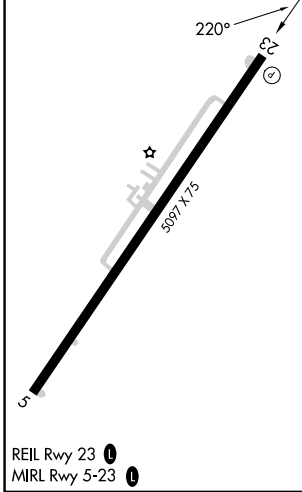
NA Rwy 23 helicopter visibility reduction below 1 SM NA. When local altimeter setting not received, use Wilmington Air Park altimeter setting and increase all MDA 60 feet. Increase LNAV Cat C/D visibility 1/8 mile and Circling Cat C visibility 1/4 mile. Procedure NA at night.

MISSED APPROACH: Climb to 1700 then climbing left turn to 3000 direct AMNIO and hold.

AWOS-3 118.775	COLUMBUS APP CON 134.0 279.6	UNICOM 122.8 (CTAF) 0
--------------------------	--	---------------------------------



ELEV	980	TDZE	979
------	------------	------	------------



CATEGORY	A	B	C	D
LNAV MDA	1540-1	561 (600-1)	1540-1 ⁵ / ₈	561 (600-1 ⁵ / ₈)
CIRCLING	1580-1 600 (600-1)	1640-1 660 (700-1)	1640-1 ³ / ₄ 660 (700-1 ³ / ₄)	1660-2 ¹ / ₄ 680 (700-2 ¹ / ₄)

EC-2, 16 APR 2026 to 14 MAY 2026

EC-2, 16 APR 2026 to 14 MAY 2026