

LOC/DME I-DJK 109.95 Chan 36 (Y)	APP CRS 022°	Rwy Ldg 7026	TDZE 913
		Apt Elev 913	

ILS or LOC RWY 2

DE KALB TAYLOR MUNI (DKB)

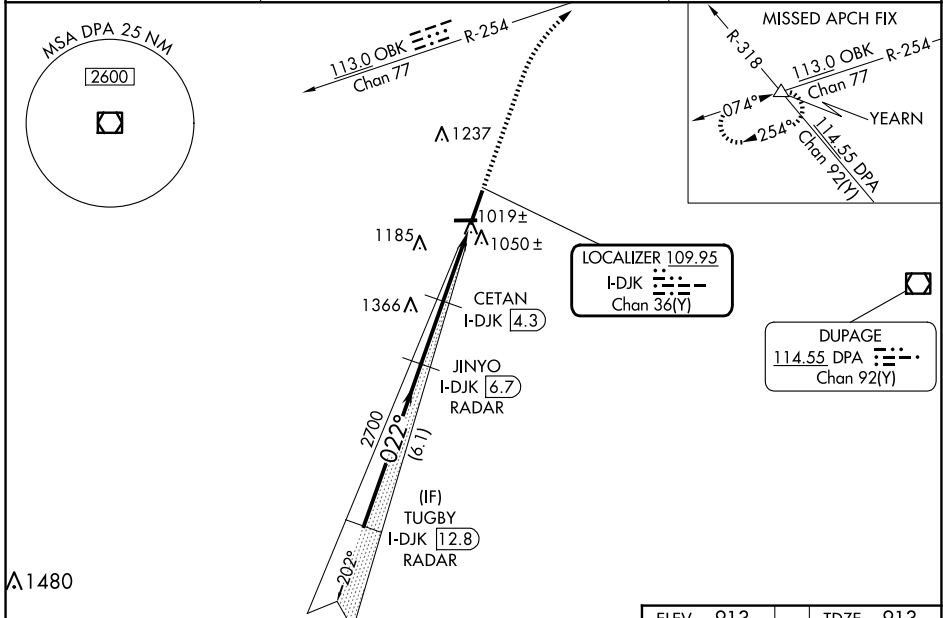
RADAR required for procedure entry. DME or RADAR required.

VDP NA with Aurora altimeter setting. When local altimeter setting not received, use Aurora altimeter setting and increase DA to 1174 feet and all MDA 80 feet; CETAN fix minimums increase Circling Cat C and D visibility 1/4 SM. For inop ALS, increase S-ILS 2 all Cats visibility to 3/8 SM. CETAN fix minimums: For inop ALS, increase S-LOC 2 Cat C and D visibility to 1 SM.

MALS

MISSED APPROACH:
Climb to 3000 on heading 022° and OBK VOR/DME R-254 to YEARN/DME and hold.

AWOS-3 119.075	CHICAGO APP CON 133.5 349.0	UNICOM 122.7 (CTAF) 0
--------------------------	---------------------------------------	--



VGSI and ILS glidepath not coincident (VGSI Angle 3.00/TCH 53).

3000 hdg 022°

OBK R-254

YEARN △

TUGBY I-DJK 12.8 RADAR

JINYO I-DJK 6.7 RADAR

CETAN I-DJK 4.3

I-DJK 2.4

I-DJK 1.3

2700

022°

2700

1900

GS 3.00° TCH 55

6.1 NM

2.4 NM

1.9 NM

1.1 NM

CATEGORY	A	B	C	D
S-ILS 2	1113-1/2		200 (200-1/2)	
S-LOC 2	1900-3/4 987 (1000-3/4)	1900-1 987 (1000-1)	1900-2 1/2	987 (1000-2 1/2)
CIRCLING	1900-1 1/4 987 (1000-1 1/4)	1900-1 1/2 987 (1000-1 1/2)	1900-3	987 (1000-3)

CETAN FIX MINIMUMS (DME REQUIRED)

S-LOC 2	1280-1/2	367 (400-1/2)	1280-5/8	367 (400-5/8)
CIRCLING	1360-1 447 (500-1)	1500-1 587 (600-1)	1600-2 687 (700-2)	1740-2 3/4 827 (900-2 3/4)

ELEV 913 TDZE 913

MIRL Rwys 2-20

MIRL Rwys 9-27

REIL Rwys 9, 20 and 27

4201 X 75

7026 X 100

022°

FAC to MAP 5.4 NM	Knots	60	90	120	150	180
Min:Seq	5:24	3:36	2:42	2:10	1:48	

EC-3, 16 APR 2026 to 14 MAY 2026

EC-3, 16 APR 2026 to 14 MAY 2026