

WAAS CH 58109 W02A	APP CRS 021°	Rwy Idg TDZE Apt Elev	7026 913 913
--	------------------------	-----------------------------	---

RNAV (GPS) RWY 2

DE KALB TAYLOR MUNI (DKB)

▼ Baro-VNAV NA when using Aurora altimeter setting. For uncompensated Baro-VNAV systems, LNAV/VNAV NA below -16°C (4°F) or above 47°C (116°F). DME/DME RNP-0.3 NA. VDP NA when using Aurora altimeter setting. When local altimeter setting not received, use Aurora altimeter setting and increase all DA 61 feet and all MDA 80 feet; increase all LPV and LNAV/VNAV visibilities, LNAV Cats C/D visibility, and Circling Cats C/D visibility ¼ mile. For inop MALSR, increase LPV all Cats visibility to 1.

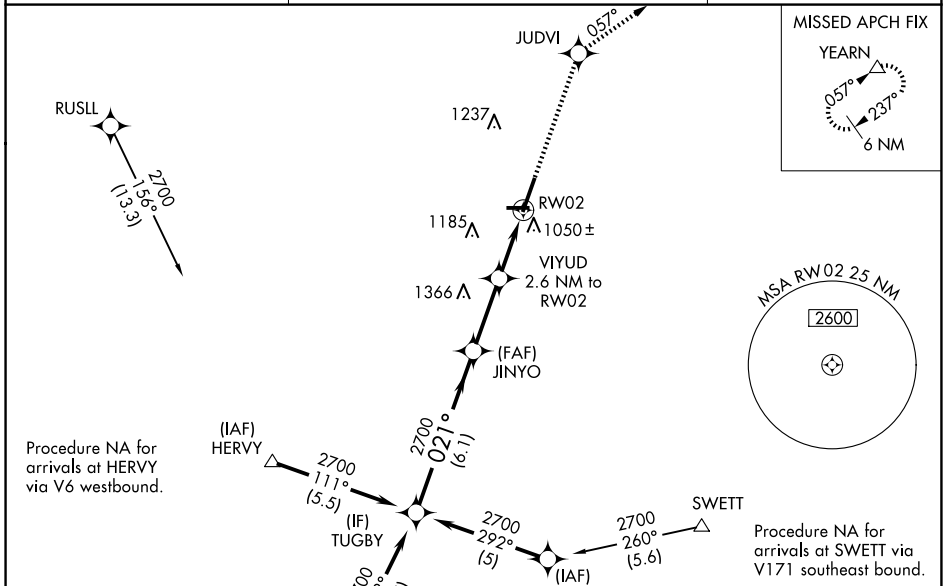
MALSR

MISSED APPROACH:
Climb to 3000 direct JUDVI and via 057° track to YEARN and hold.

AWOS-3
119.075

CHICAGO APP CON
133.5 349.0

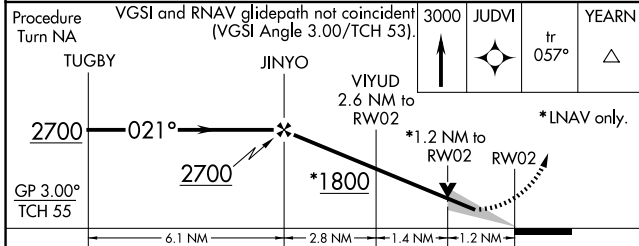
UNICOM
122.7 (CTAF) 0



EC-3, 16 APR 2026 to 14 MAY 2026

EC-3, 16 APR 2026 to 14 MAY 2026

ELEV 913	TDZE 913
REIL Rwy 9, 20 and 27	
MIRL Rwy 2-20	
MIRL Rwy 9-27	



CATEGORY	A	B	C	D
LPV DA		1207-½	294 (300-½)	
LNAV/VNAV DA		1360-1	447 (500-1)	
LNAV MDA	1360-½ 447 (500-½)		1360-¾ 447 (500-¾)	1360-1 447 (500-1)
CIRCLING	1360-1 447 (500-1)	1500-1 587 (600-1)	1600-2 687 (700-2)	1740-2¾ 827 (900-2¾)

