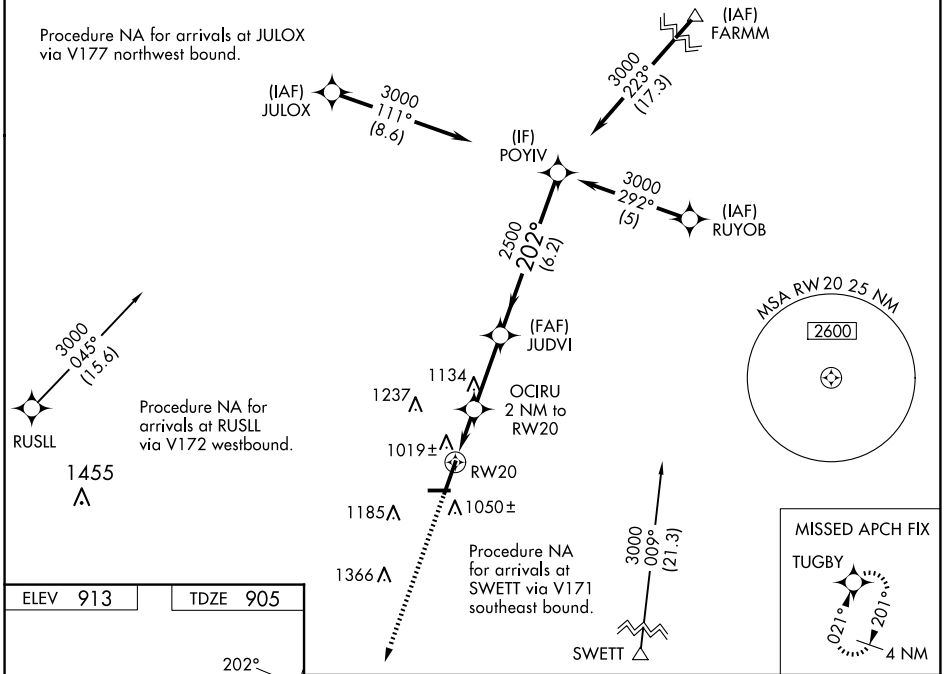


WAAS CH 50409 W20A	APP CRS 202°	Rwy Idg TDZE Apt Elev	7026 905 913
--	------------------------	-----------------------------	---

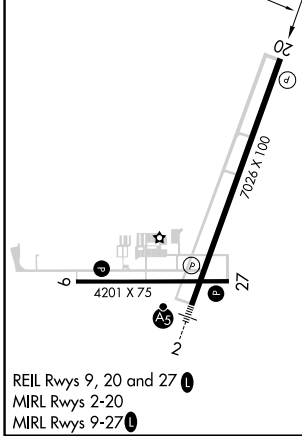
RNAV (GPS) RWY 20

DE KALB TAYLOR MUNI (DKB)

<p>⚠ Baro-VNAV NA when using Aurora altimeter setting. For uncompensated Baro-VNAV systems, LNAV/VNAV NA below -16°C (4°F) or above 47°C (116°F). ⚠ DME/DME RNP-0.3 NA. Visibility reduction by helicopters NA. VDP NA when using Aurora altimeter setting. When local altimeter setting not received, use Aurora altimeter setting and increase all DA 61 feet and all MDA 80 feet; increase all LPV and LNAV/VNAV visibilities, LNAV Cat D visibility, and Circling Cats C/D visibility ¼ mile.</p>	<p>MISSED APPROACH: Climb to 2700 direct TUGBY and hold.</p>	
<p>AWOS-3 119.075</p>	<p>CHICAGO APP CON 133.5 349.0</p>	<p>UNICOM 122.7 (CTAF) 0</p>



ELEV 913	TDZE 905
----------	----------



2700	TUGBY	VGSI and RNAV glidepath not coincident (VGSI Angle 3.00/TCH 29).	POYIV
			3000
			Procedure Turn NA
			GP 3.00°
			TCH 45

CATEGORY	A	B	C	D
LPV DA		1155-¾	250 (300-¾)	
LNAV/VNAV DA		1430-1¾	525 (600-1¾)	
LNAV MDA	1320-1	415 (500-1)	1320-1¼	415 (500-1¼)
CIRCLING	1360-1	1500-1	1600-2	1740-2¾
	447 (500-1)	587 (600-1)	687 (700-2)	827 (900-2¾)

EC-3, 16 APR 2026 to 14 MAY 2026

EC-3, 16 APR 2026 to 14 MAY 2026