

WAAS CH <b>72709</b> <b>W27A</b>	APP CRS <b>272°</b>	Rwy Idg TDZE <b>912</b> Apt Elev <b>913</b>	<b>4201</b>
--	------------------------	---	-------------

# RNAV (GPS) RWY 27

DE KALB TAYLOR MUNI (DKB)

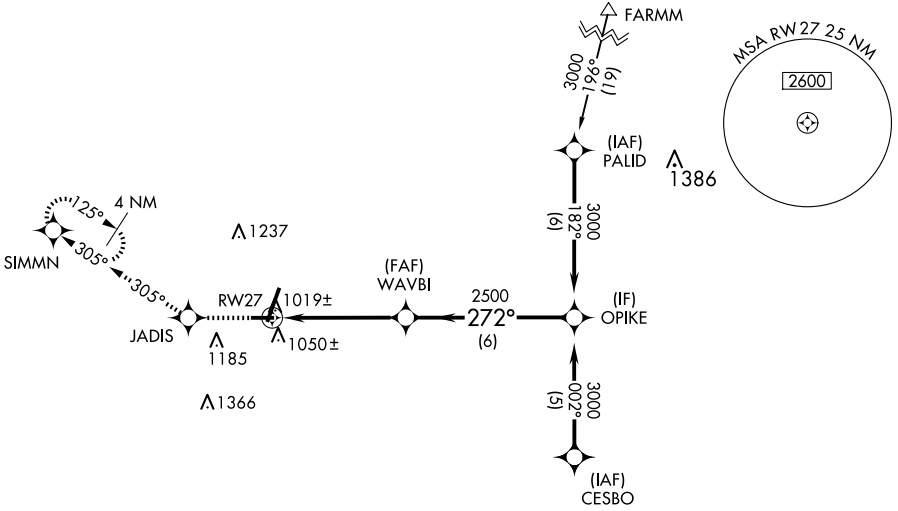
**⚠** When local altimeter setting not received, use Aurora altimeter setting and increase all DA 61 feet and all MDA 80 feet; increase all LPV and LNAV/VNAV visibilities, LNAV Cats C/D visibility, and Circling Cats C/D visibility ¼ mile. Baro-VNAV NA when using Aurora altimeter setting. VDP NA when using Aurora altimeter setting. For uncompensated Baro-VNAV systems, LNAV/VNAV NA below -16° C (4°F) or above 47° C (116° F). DME/DME RNP-0.3 NA.

**MISSED APPROACH:** Climb to 3000 direct JADIS and via 305° track to SIMMN and hold.

AWOS-3  
**119.075**

CHICAGO APP CON  
**133.5 349.0**

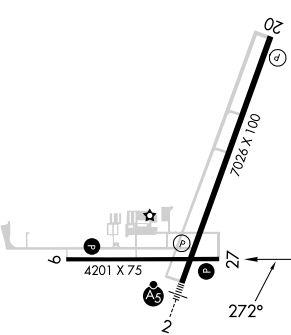
UNICOM  
**122.7 (CTAF) 0**



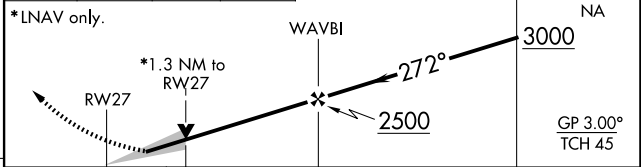
EC-3, 16 APR 2026 to 14 MAY 2026

EC-3, 16 APR 2026 to 14 MAY 2026

ELEV <b>913</b>	TDZE <b>912</b>
-----------------	-----------------



3000	JADIS	305° tr	SIMMN	VGSI and RNAV glidepath not coincident (VGSI Angle 3.00/TCH 24).
------	-------	---------	-------	--



CATEGORY	A	B	C	D
LPV DA	1162-¾		250 (300-¾)	
LNAV/VNAV DA	1317-1½		405 (500-1½)	
LNAV MDA	1360-1	448 (500-1)	1360-1¼ 448 (500-1¼)	1360-1½ 448 (500-1½)
CIRCLING	1360-1 447 (500-1)	1500-1 587 (600-1)	1600-2 687 (700-2)	1740-2¾ 827 (900-2¾)

REIL Rwy 9, 20 and 27 **0**  
MIRL Rwy 2-20  
MIRL Rwy 9-27 **0**