

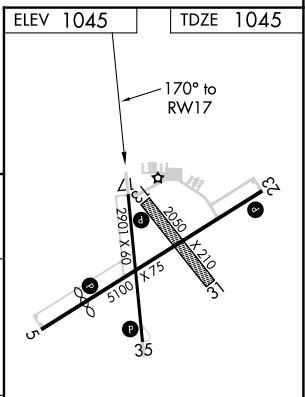
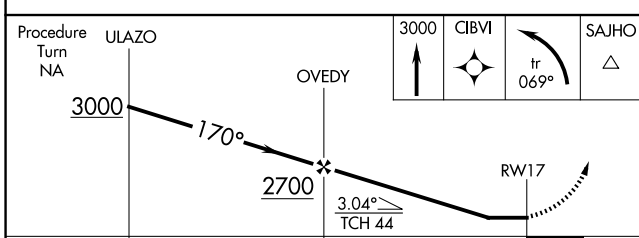
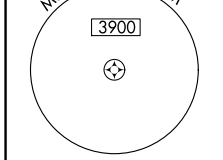
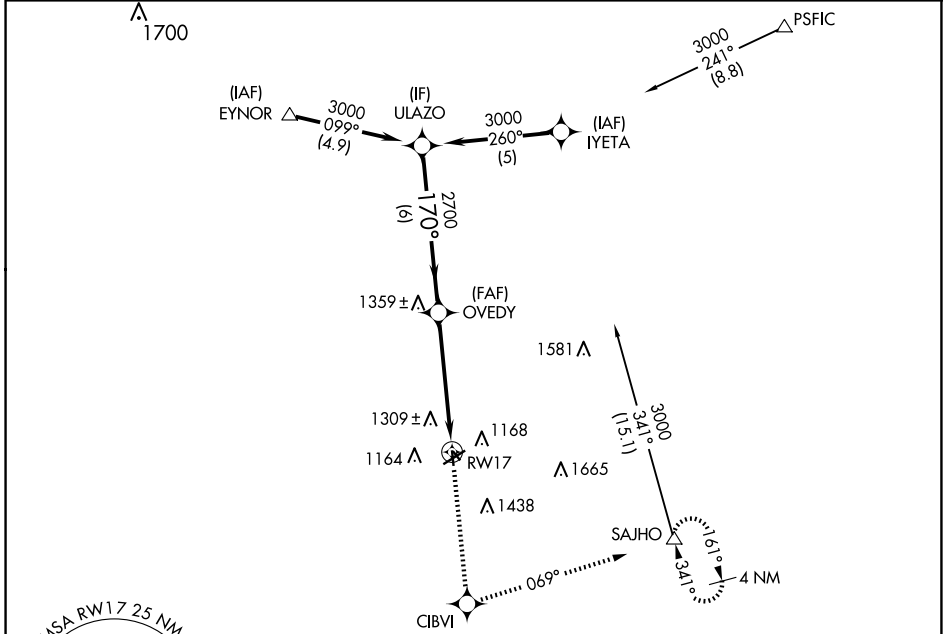
APP CRS <b>170°</b>	Rwy Idg <b>2901</b>
	TDZE <b>1045</b>
	Apt Elev <b>1045</b>

# RNAV (GPS) RWY 17

RED OAK MUNI (RDK)

<p><b>⚠</b> DME/DME RNP-0.3 NA. Visibility reduction by helicopters NA. When local altimeter setting not received, use Shenandoah altimeter setting and increase all MDA 60 feet, and increase Circling Cat B visibility ¼ mile. Circling NA to Rwys 13 and 31.</p>	<p><b>⚠</b> MISSED APPROACH: Climb to 3000 direct CIBVI and left turn via track 069° to SAJHO and hold.</p>
---	---

AWOS-3P <b>123.925</b>	OMAHA APP CON <b>124.5 263.0</b>	UNICOM <b>122.8 (CTAF)</b>
---------------------------	-------------------------------------	-------------------------------



CATEGORY	A	B	C	D
INAV MDA	1600-1	555 (600-1)		NA
CIRCLING	1620-1 575 (600-1)	1780-1 735 (800-1)		NA

MIRL Rwy 5-23 and 17-35  
 REIL Rwy 5, 17, 23, and 35