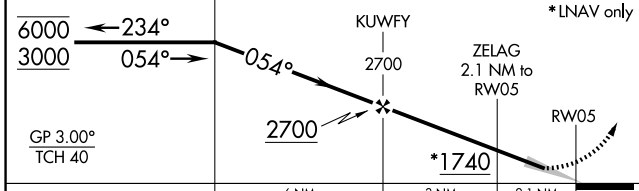
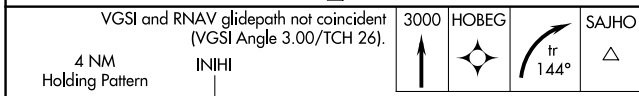
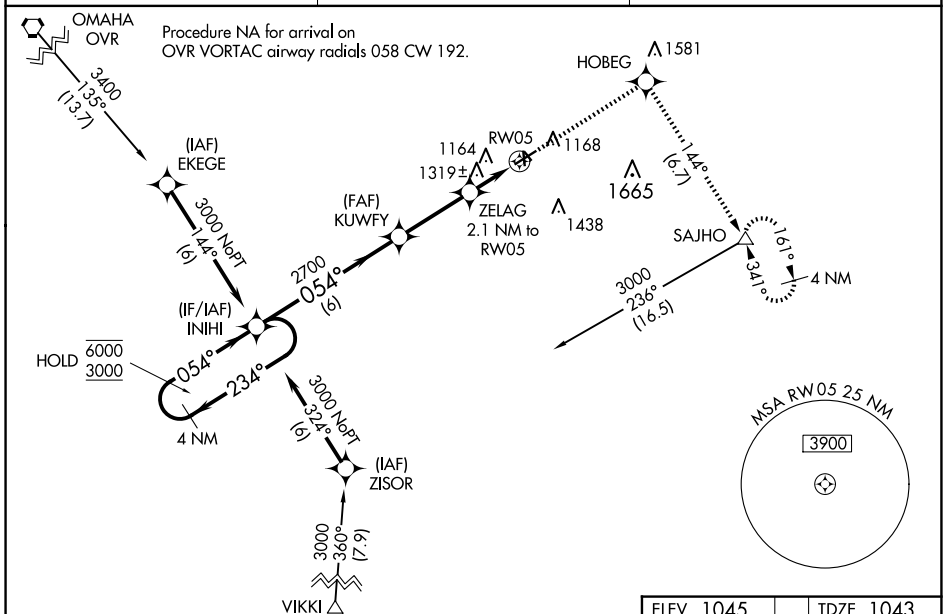


WAAS CH <b>42927</b> <b>W05A</b>	APP CRS <b>054°</b>	Rwy ldg TDZE <b>1043</b> Apt Elev <b>1045</b>
--	------------------------	---

# RNAV (GPS) RWY 5

RED OAK MUNI (RDK)

RNP APCH		MISSED APPROACH: Climb to 3000 direct HOBEG and right turn on track 144° to SAJHO and hold.
AWOS-3P <b>123.925</b>	OMAHA APP CON <b>124.5 263.0</b>	UNICOM <b>122.8 (CTAF) 0</b>



ELEV 1045	TDZE 1043
-----------	-----------

5100 x 75

2001 x 60

2020 x 210

054° to RW05

MIRL Rwy 5-23 and 17-35 0

REIL Rwy 5, 17, 23, and 35 0

NC-3, 16 APR 2026 to 14 MAY 2026

NC-3, 16 APR 2026 to 14 MAY 2026