


RED OAK, IOWA

AL-6051 (FAA)

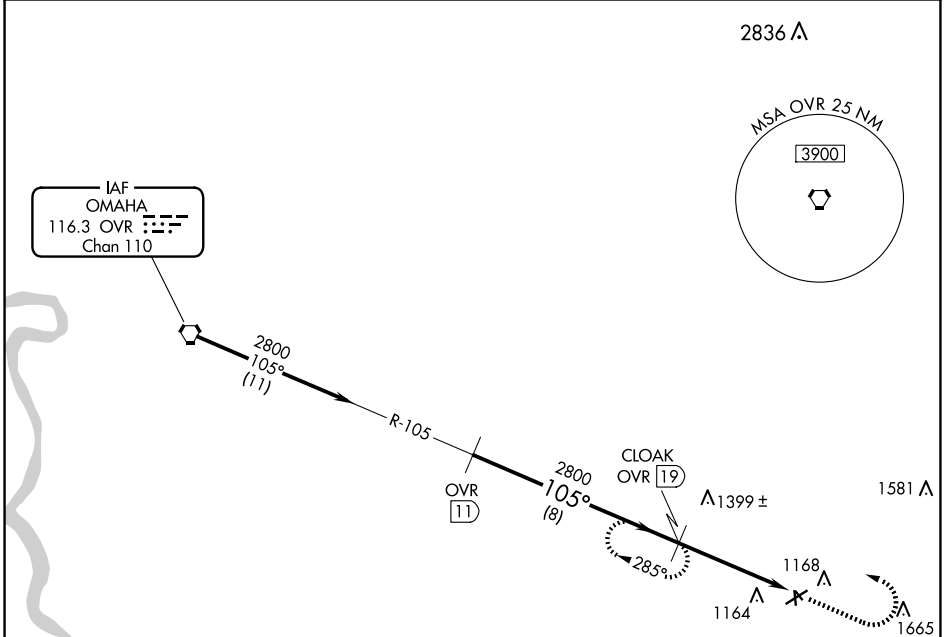
21084

VORTAC OVR <b>116.3</b> Chan <b>110</b>	APP CRS <b>105°</b>	Rwy Idg TDZE Apt Elev	<b>N/A</b> <b>N/A</b> <b>1045</b>
---	------------------------	-----------------------------	---

# VOR/DME-A RED OAK MUNI (RDK)

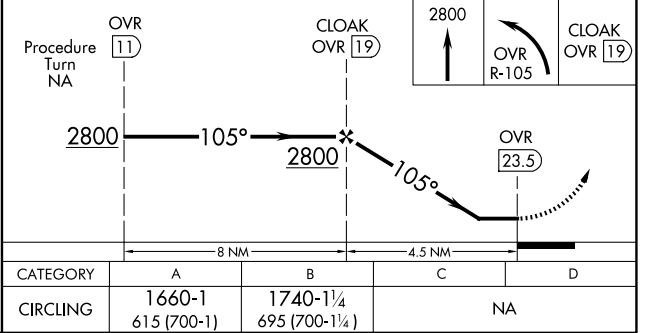
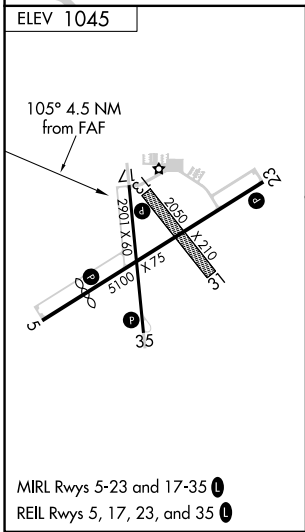
 Circling NA to Rwys 13 and 31.
 MISSED APPROACH: Climb to 2800 then left turn via OVR R-105 to CLOAK/19 DME and hold.

AWOS-3P <b>123.925</b>	OMAHA APP CON <b>124.5 263.0</b>	UNICOM <b>122.8</b> (CTAF) 
---------------------------	-------------------------------------	---



NC-3, 16 APR 2026 to 14 MAY 2026

NC-3, 16 APR 2026 to 14 MAY 2026



RED OAK, IOWA  
Amdt 5A 25MAR21

41°01'N-95°16'W

# RED OAK MUNI (RDK) VOR/DME-A