

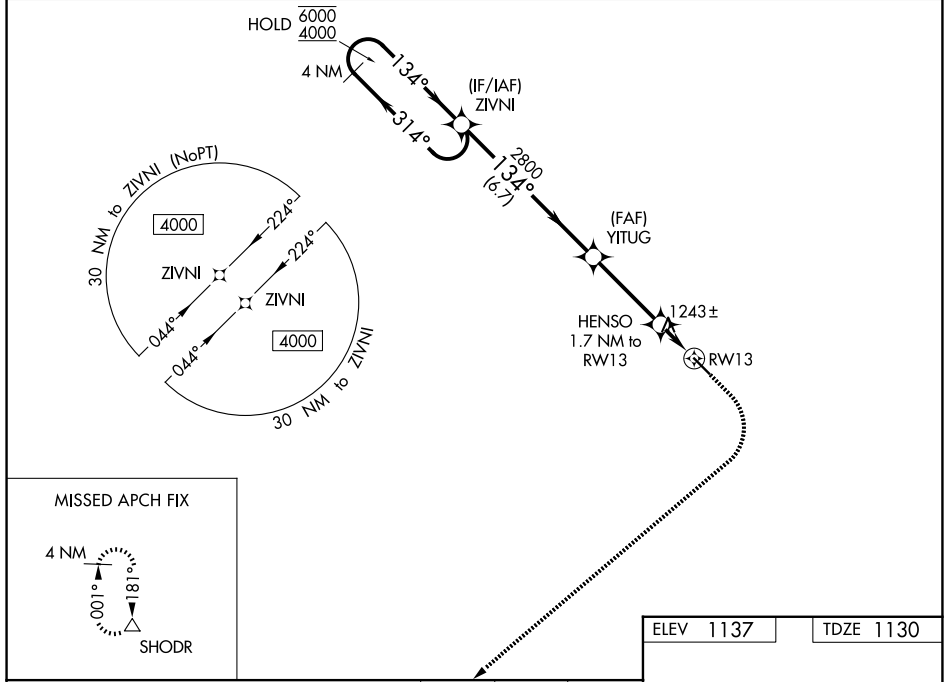
WAAS CH <b>53332</b> <b>W13A</b>	APP CRS <b>134°</b>	Rwy Ldg TDZE Apt Elev	<b>4602</b> <b>1130</b> <b>1137</b>
--	------------------------	-----------------------------	---

# RNAV (GPS) RWY 13

IOWA FALLS MUNI (IF'A)

RNP APCH - GPS.		MISSED APPROACH: Climb to 1600 then climbing right turn to 4000 direct SHODR and hold.
<p><b>⚠</b> For uncompensated Baro-VNAV systems, LNAV/VNAV NA below -17°C or above 54°C. Circling Rwy 31 NA at night.</p>		

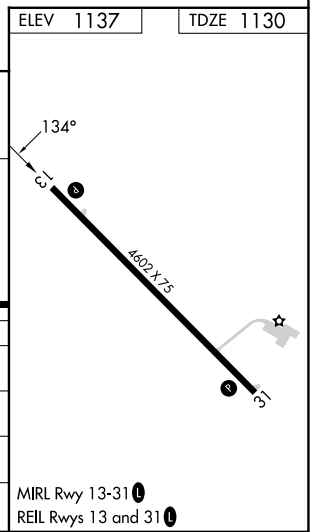
AWOS-3 <b>120.425</b>	DES MOINES APP CON * <b>118.9 251.15</b>	UNICOM <b>122.8 (CTAF) 0</b>
--------------------------	---	---------------------------------



VGSI and RNAV glidepath not coincident (VGSI Angle 3.00/TCH 44).

4 NM Holding Pattern	ZIVNI	YITUG	HENSO	SHODR
6000 ← 314°		2800	1.7 NM to RW13	△
4000 → 134°			1 NM to RW13	
GP 3.00° TCH 40		1700		
	6.7 NM	3.4 NM	0.7 NM	1 NM

CATEGORY	A	B	C	D
LPV DA		1380-1	250 (300-1)	
LNAV/VNAV DA		1395-1	265 (300-1)	
LNAV MDA		1500-1	370 (400-1)	
CIRCLING	1540-1 403 (500-1)	1620-1 483 (500-1)	1760-1¾ 623 (700-1¾)	1800-2 663 (700-2)



NC-3, 16 APR 2026 to 14 MAY 2026

NC-3, 16 APR 2026 to 14 MAY 2026