

APP CRS	Rwy Ldg	<b>4201</b>
<b>172°</b>	TDZE	<b>2009</b>
	Apt Elev	<b>2012</b>

# RNAV (GPS) RWY 17

LARNED-PAWNEE COUNTY (LQR)

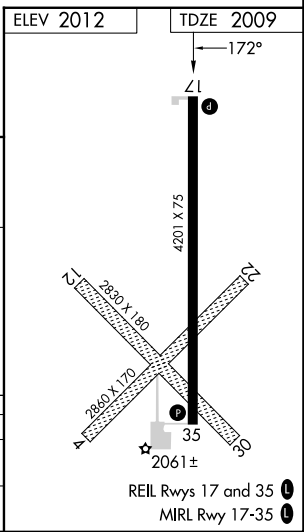
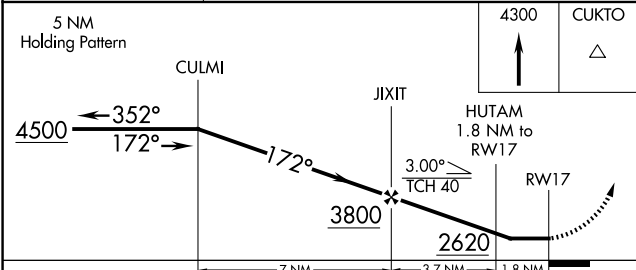
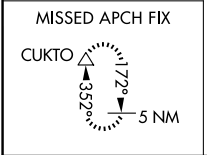
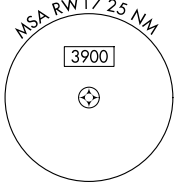
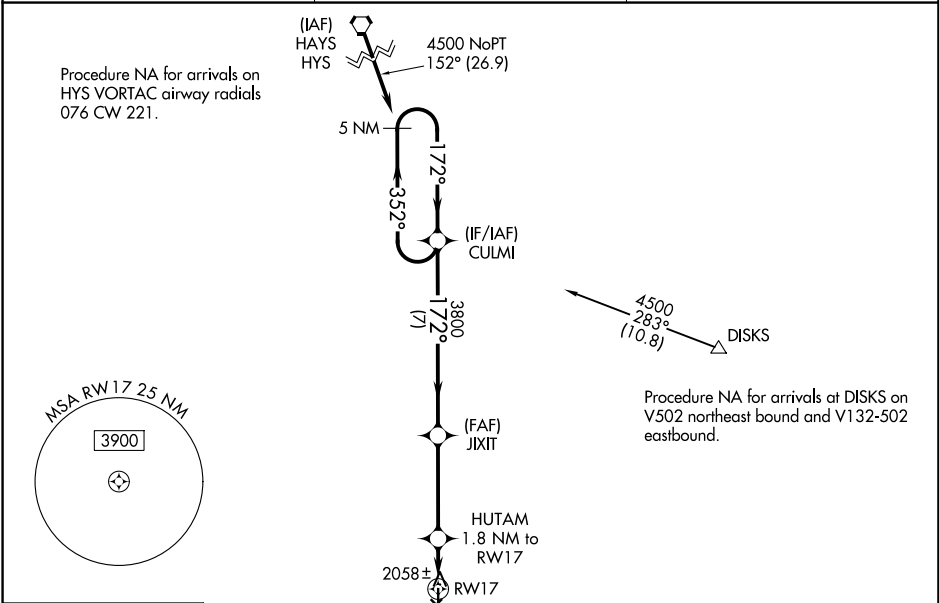
**⚠** DME/DME RNP-0.3 NA. Procedure NA at night. Visibility reduction by helicopters NA. When local altimeter setting not received, use Great Bend altimeter setting: increase all MDA 60 feet and Circling Cat C visibility ¼ mile. Circling NA to Rwy's 4, 12, 22 and 30.

**MISSED APPROACH:** Climb to 4300 direct CUKTO and hold.

**AWOS-3PT**  
**119.875**

**KANSAS CITY CENTER**  
**124.4 322.4**

**UNICOM**  
**122.8 (CTAF)**



CATEGORY	A	B	C	D
LNVA MDA	2320-1 311 (400-1)			NA
CIRCLING	2500-1 488 (500-1)	2600-1 588 (600-1)	2640-1¾ 628 (700-1¾)	NA

NC-2, 16 APR 2026 to 14 MAY 2026

NC-2, 16 APR 2026 to 14 MAY 2026