

(CARYN8.CARYN) 26078

AL-6063 (FAA)

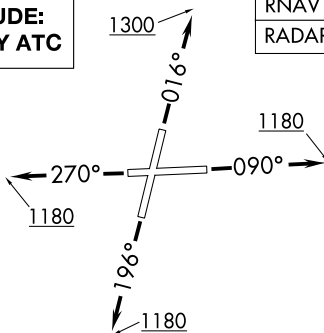
LEWIS UNIVERSITY (L.O.T)  
CHICAGO/ROMEOVILLE, ILLINOIS

# CARYN EIGHT DEPARTURE (RNAV)

CHICAGO DEP CON  
119.35 354.075  
D-ATIS  
126.675  
GND CON  
120.425  
LEWIS TOWER \*  
134.8 (CTAF)

**TOP ALTITUDE:  
ASSIGNED BY ATC**

RNAV 1 - DME/DME/IRU or GPS.  
RADAR required.



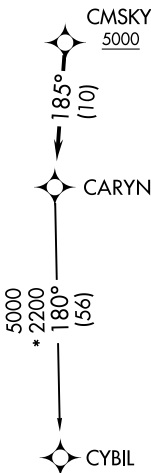
NOTE: Turbojet departures maintain 250K until advised by ATC.

**TAKEOFF MINIMUMS:**

Rwys 20, 27: Standard.

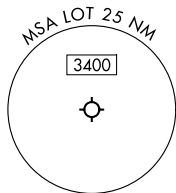
Rwy 2: Standard with minimum climb of 420'/NM to 2700.

Rwy 9: Standard with minimum climb of 260'/NM to 2700.



EC-3, 16 APR 2026 to 14 MAY 2026

EC-3, 16 APR 2026 to 14 MAY 2026



NOTE: Chart not to scale.



## DEPARTURE ROUTE DESCRIPTION

TAKEOFF RUNWAY 2: Climb on heading 016° to 1300, for vectors to CMSKY, thence....

TAKEOFF RUNWAY 9: Climb on heading 090° to 1180, for vectors to CMSKY, thence....

TAKEOFF RUNWAY 20: Climb on heading 196° to 1180, for vectors to CMSKY, thence....

TAKEOFF RUNWAY 27: Climb on heading 270° to 1180, for vectors to CMSKY, thence....

....on track 185° to CARYN, then on transition. Maintain ATC assigned altitude.  
Expect filed altitude 10 minutes after departure.

CYBIL TRANSITION (CARYN8.CYBIL):

# CARYN EIGHT DEPARTURE (RNAV)

(CARYN8.CARYN) 19MAR26

CHICAGO/ROMEOVILLE, ILLINOIS  
LEWIS UNIVERSITY (L.O.T)