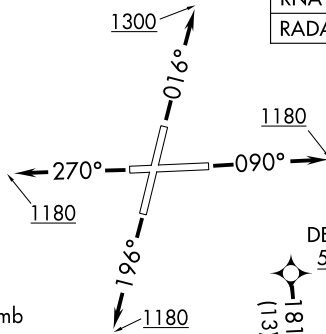


DARCY EIGHT DEPARTURE (RNAV)

CHICAGO DEP CON
119.35 354.075
D-ATIS
126.675
GND CON
120.425
LEWIS TOWER *
134.8 (CTAF)

RNAV 1 - DME/DME/IRU or GPS.
RADAR required.

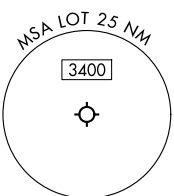
**TOP ALTITUDE:
ASSIGNED BY ATC**



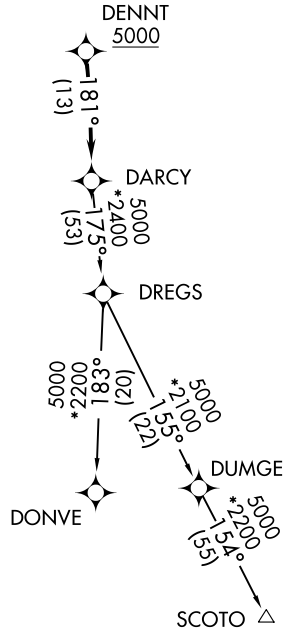
TAKEOFF MINIMUMS:

Rwys 9, 20, 27: Standard.
Rwy 2: Standard with minimum climb
of 420'/NM to 1200.

NOTE: Turbojet departures maintain 250K
until advised by ATC.



NOTE: Chart not to scale.



DEPARTURE ROUTE DESCRIPTION

TAKEOFF RUNWAY 2: Climb on heading 016° to 1300, for vectors to DENNT, thence. . . .

TAKEOFF RUNWAY 9: Climb on heading 090° to 1180, for vectors to DENNT, thence. . . .

TAKEOFF RUNWAY 20: Climb on heading 196° to 1180, for vectors to DENNT, thence. . . .

TAKEOFF RUNWAY 27: Climb on heading 270° to 1180, for vectors to DENNT, thence. . . .

. . . . on track 181° to DARCY, then on transition, maintain ATC assigned altitude. Expect filed altitude 10 minutes after departure.

DONVE TRANSITION (DARCY8.DONVE):

SCOTO TRANSITION (DARCY8.SCOTO):