

ELANR NINE DEPARTURE (RNAV)

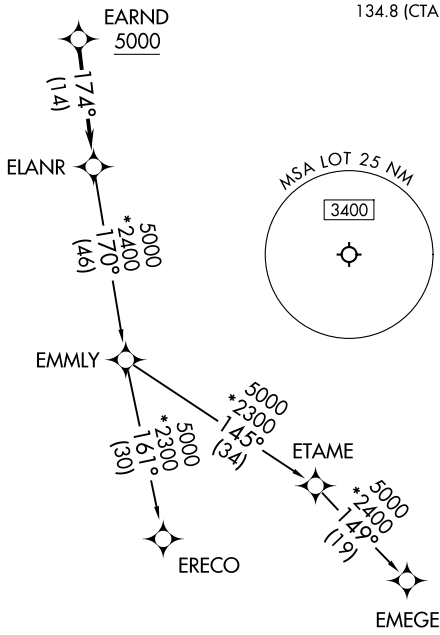
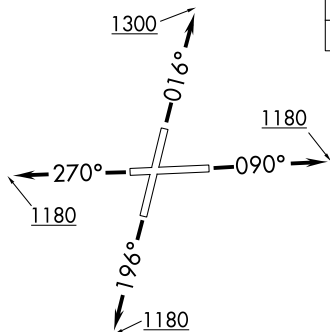
LEWIS UNIVERSITY (LOT)
CHICAGO/ROMEOVILLE, ILLINOIS

RNAV 1 - DME/DME/IRU or GPS.

RADAR required.

CHICAGO DEP CON
119.35 354.075
D-ATIS
126.675
GND CON
120.425
LEWIS TOWER *
134.8 (CTAF)

**TOP ALTITUDE:
ASSIGNED BY ATC**



TAKEOFF MINIMUMS:

Rwys 9, 20, 27: Standard.
Rwy 2: Standard with minimum climb of 420'/NM to 1200.

NOTE: Turbojet departures maintain 250K until advised by ATC.
NOTE: EMMLY Transition: For aircraft inbound to Indianapolis Terminal Area, or as assigned by ATC.

NOTE: Chart not to scale.

DEPARTURE ROUTE DESCRIPTION

- TAKEOFF RUNWAY 2: Climb on heading 016° to 1300, for vectors to EARND, thence. . . .
- TAKEOFF RUNWAY 9: Climb on heading 090° to 1180, for vectors to EARND, thence. . . .
- TAKEOFF RUNWAY 20: Climb on heading 196° to 1180, for vectors to EARND, thence. . . .
- TAKEOFF RUNWAY 27: Climb on heading 270° to 1180, for vectors to EARND, thence. . . .

. . . . on track 174° to ELANR, then on transition, maintain ATC assigned altitude. Expect filed altitude 10 minutes after departure.

- EMEGE TRANSITION (ELANR9.EMEGE):
- EMMLY TRANSITION (ELANR9.EMMLY):
- ERECO TRANSITION (ELANR9.ERECO):