

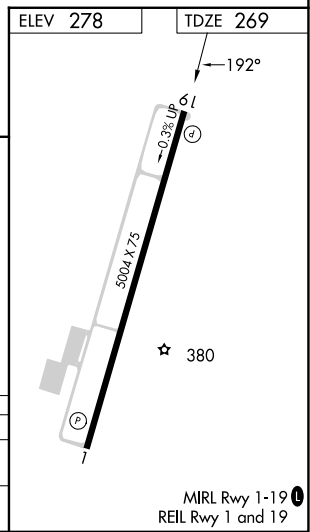
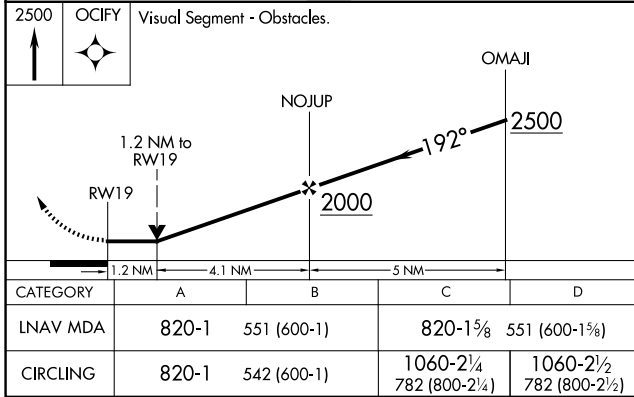
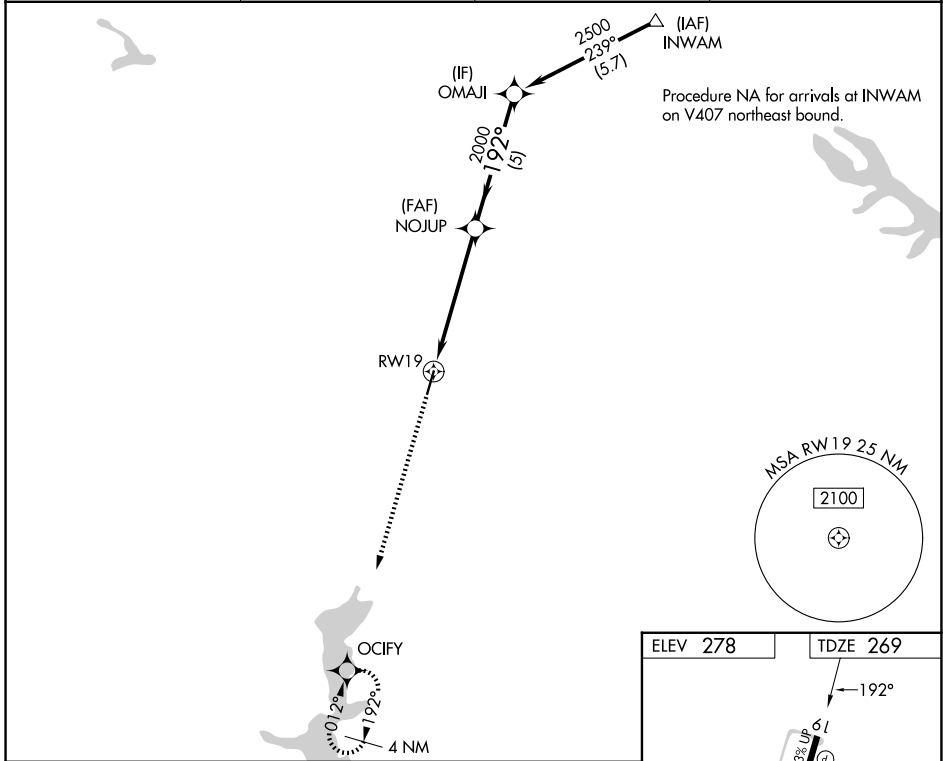
APP CRS	Rwy Ldg	5004
192°	TDZE	269
	Apt Elev	278

RNAV (GPS) RWY 19

MINDEN (MNE)

RNP APCH.		MISSED APPROACH: Climb to 2500 direct OCIFY and hold.
	Rwy 19 helicopter visibility reduction below 3/4 SM NA. When local altimeter setting not received, use Barksdale AFB altimeter setting; increase all MDAs 80 feet; increase visibility LNAV Cats C/D 1/2 SM and Circling Cats C/D 1/4 SM.	

AWOS-3PT 119.325	SHREVEPORT APP CON 123.75 360.725	GCO 135.075	UNICOM 122.8 (CTAF)
----------------------------	---	-----------------------	-------------------------------



MINDEN, LOUISIANA	MINDEN (MNE)	
Orig-C 07OCT21	32°39'N-93°18'W	RNAV (GPS) RWY 19

SC-4, 16 APR 2026 to 14 MAY 2026

SC-4, 16 APR 2026 to 14 MAY 2026