

APP CRS	Rwy Idg	<b>4802</b>
<b>081°</b>	TDZE	<b>912</b>
	Apt Elev	<b>912</b>

# RNAV (GPS) RWY 8

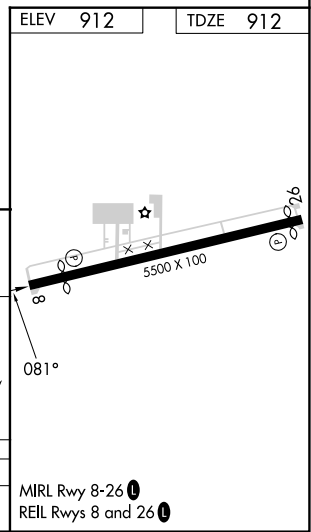
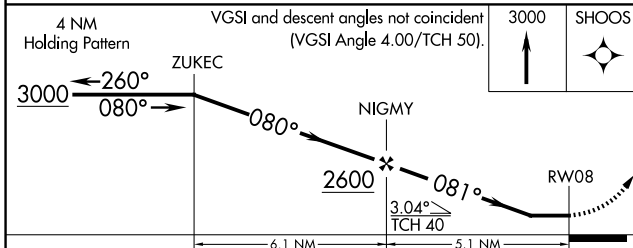
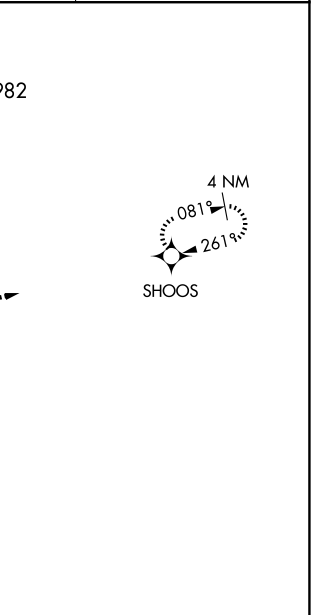
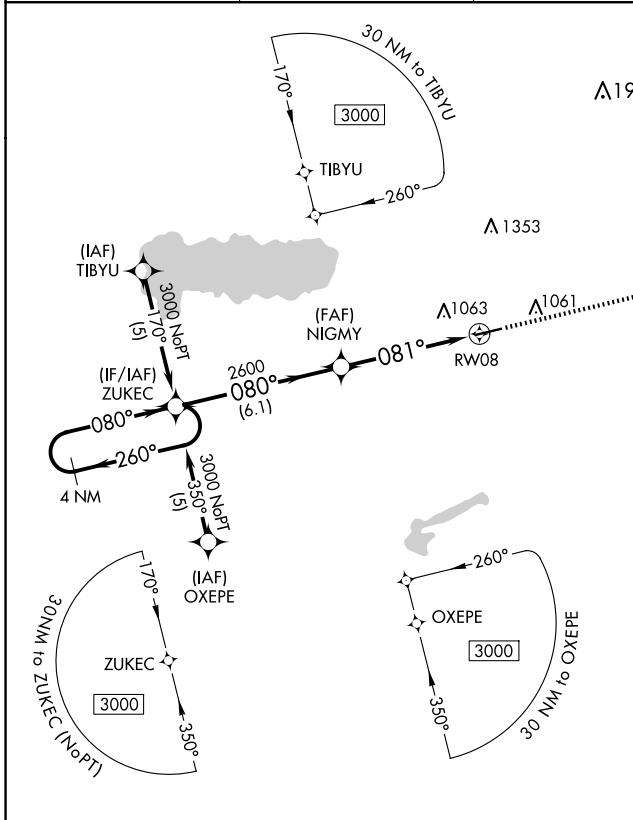
NEIL ARMSTRONG (AXV)

RNP APCH - GPS.

**NA** Rwy 8 helicopter visibility reduction below 1 SM NA. When local altimeter setting not received, use Lima altimeter setting and increase all MDAs 60 feet and visibility Cat C 1/8 SM. Procedure NA at night.

MISSED APPROACH: Climb to 3000 direct SHOOS and hold.

AWOS-3PT <b>128.325</b>	COLUMBUS APP CON <b>134.45 294.5</b>	UNICOM <b>122.8</b> (CTAF)	<b>122.7</b>
----------------------------	---	-------------------------------	--------------



CATEGORY	A	B	C	D
LNNAV MDA	1380-1	468 (500-1)	1380-1 1/4 468 (500-1 1/4)	NA

EC-2, 16 APR 2026 to 14 MAY 2026

EC-2, 16 APR 2026 to 14 MAY 2026