

WAAS CH 63216 W15A	APP CRS 151°	Rwy Ldg TDZE 236 Apt Elev 236
--	------------------------	---

RNAV (GPS) RWY 15

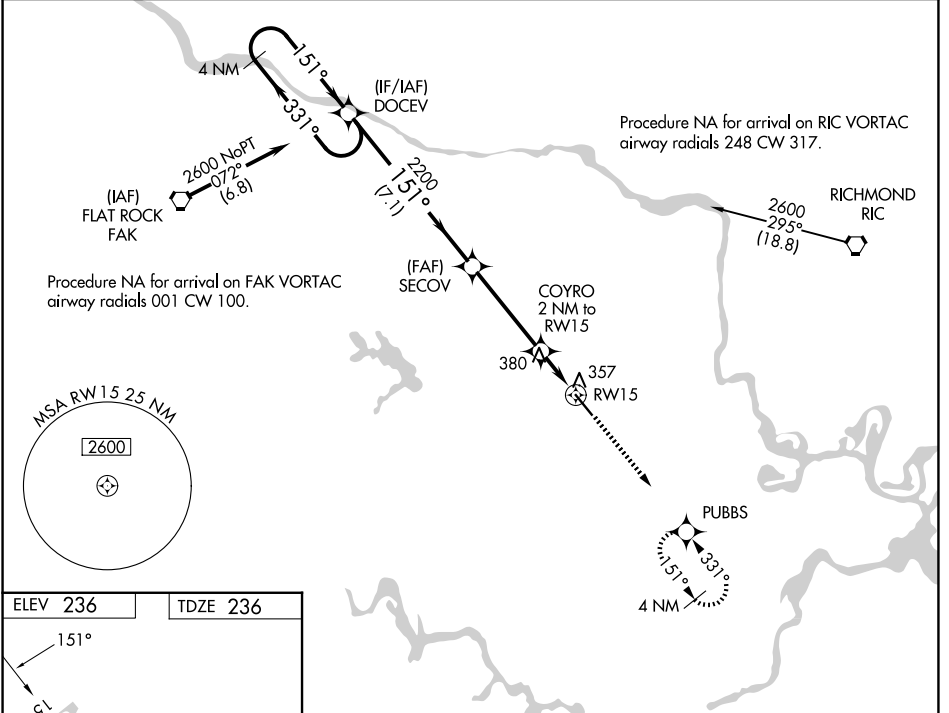
RICHMOND EXEC/CHESTERFIELD COUNTY (F'CI)

RNP APCH.

NA For uncompensated Baro-VNAV systems, LNAV/VNAV NA below -15°C or above 54°C. When local altimeter setting not received, use Richmond Intl altimeter setting and increase all DA 36 feet, and all MDA 40 feet, increase LNAV/VNAV all Cats visibility ¼ mile. VDP and Baro-VNAV NA when using Richmond Intl altimeter setting.

MISSED APPROACH: Climb to 2000 direct PUBBS and hold.

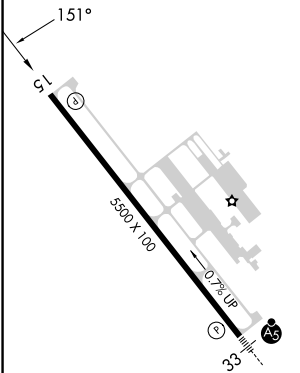
AWOS-3PT 128.625	POTOMAC APP CON 126.75 307.2	CLNC DEL 124.6	UNICOM 123.05 (CTAF) 0
----------------------------	--	--------------------------	----------------------------------



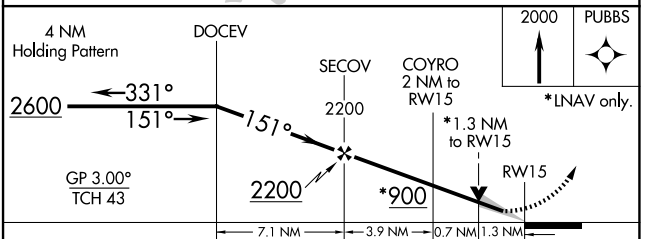
NE-3, 16 APR 2026 to 14 MAY 2026

NE-3, 16 APR 2026 to 14 MAY 2026

ELEV 236	TDZE 236
----------	----------



REIL Rwy 15 0
HIRL Rwy 15-33 0



CATEGORY	A	B	C	D
LPV DA	486-1 250 (300-1)			
LNAV/VNAV DA	692-1½ 456 (500-1½)			
LNAV MDA	680-1 444 (500-1)		680-1⅜ 444 (500-1⅜)	
			680-1½ 444 (500-1½)	