

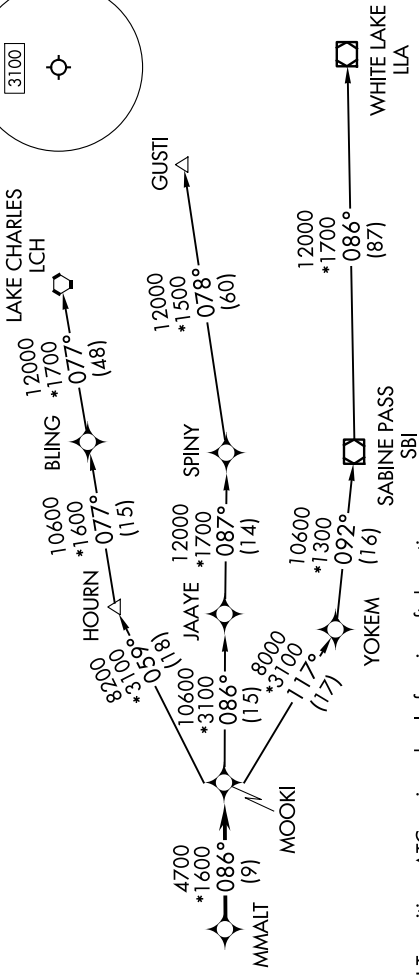
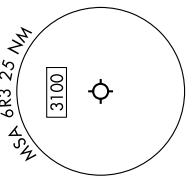
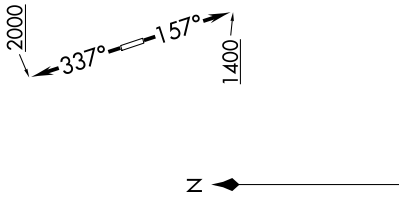
# MMALT SEVEN DEPARTURE (RNAV)

SC-5, 16 APR 2026 to 14 MAY 2026

HOUSTON DEP CON  
 119.7 281.4  
 AWOS-3  
 119.325  
 CTAF  
 123.0

RNAV 1 - DME/DME/IRU or GPS.  
 RADAR required.

**TOP ALTITUDE:  
 ASSIGNED BY ATC**



NOTE: GUSTI and LCH Transitions ATC assigned only for aircraft departing AXH, EFD, GLS, HPY, IWS, LBX, LVJ, SGR, TME, T00, T41 and 54T.

### TAKEOFF MINIMUMS

Rwy 16: Standard with minimum climb of 500'/NM to 660.  
 Rwy 34: Standard with minimum climb of 500'/NM to 1000.

NOTE: Chart not to scale.

### DEPARTURE ROUTE DESCRIPTION

TAKEOFF RUNWAY 16: Climb on heading 157° to 1400, for RADAR vectors to MMALT, thence...  
 TAKEOFF RUNWAY 34: Climb on heading 337° to 2000, for RADAR vectors to MMALT, thence...

... on track 086° to MOOKI, then on (transition). Maintain ATC assigned altitude. Expect filed altitude 10 minutes after departure.

- GUSTI TRANSITION (MMALT7.GUSTI)
- LAKE CHARLES TRANSITION (MMALT7.LCH)
- WHITE LAKE TRANSITION (MMALT7.LLA)