

WAAS CH <b>50321</b> <b>W06A</b>	APP CRS <b>063°</b>	Rwy Ldg <b>4111</b> TDZE <b>1446</b> Apt Elev <b>1448</b>
----------------------------------------	------------------------	-----------------------------------------------------------------

# RNAV (GPS) RWY 6

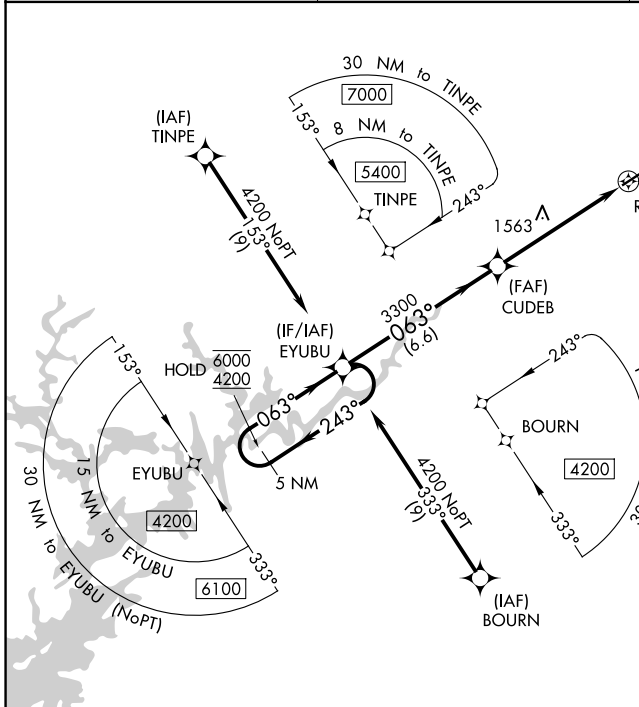
HABERSHAM COUNTY (AJR)

RNP APCH - GPS.

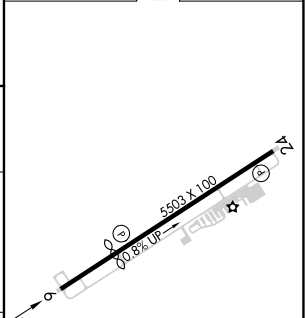
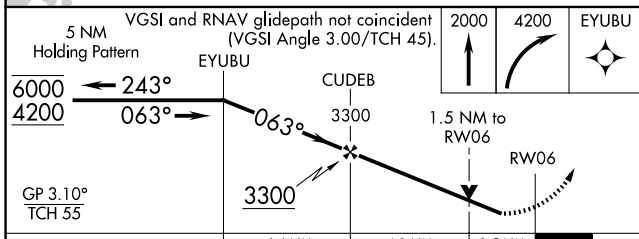
**⚠** Circling Rwy 24 NA at night. Rwy 6 helicopter visibility reduction below 3/4 SM NA. For uncompensated Baro-VNAV systems, LNAV/VNAV NA below -17°C or above 54°C.

MISSED APPROACH: Climb to 2000 then climbing right turn to 4200 direct EYUBU and hold.

AWOS-3 <b>119.175</b>	ATLANTA CENTER <b>134.8 379.95</b>	UNICOM <b>122.7 (CTAF) 0</b>
--------------------------	---------------------------------------	---------------------------------



ELEV 1448	<b>D</b>	TDZE 1446
-----------	----------	-----------



CATEGORY	A	B	C	D
LPV DA		1710-7/8	264 (300-7/8)	
LNAV/VNAV DA		1824-1	378 (400-1)	
LNAV MDA	1980-1	534 (600-1)	1980-1 1/2	534 (600-1 1/2)
CIRCLING	2100-1 652 (700-1)	2280-1 1/4 832 (900-1 1/4)	2280-2 1/2 832 (900-2 1/2)	2280-2 3/4 832 (900-2 3/4)

MIRL Rwy 6-24 0

SE-4, 16 APR 2026 to 14 MAY 2026

SE-4, 16 APR 2026 to 14 MAY 2026