


WAAS CH 50214 W25A	APP CRS 255°	Rwy Ldg TDZE Apt Elev	5253 400 400
--	------------------------	-----------------------------	---

RNAV (GPS) RWY 25R

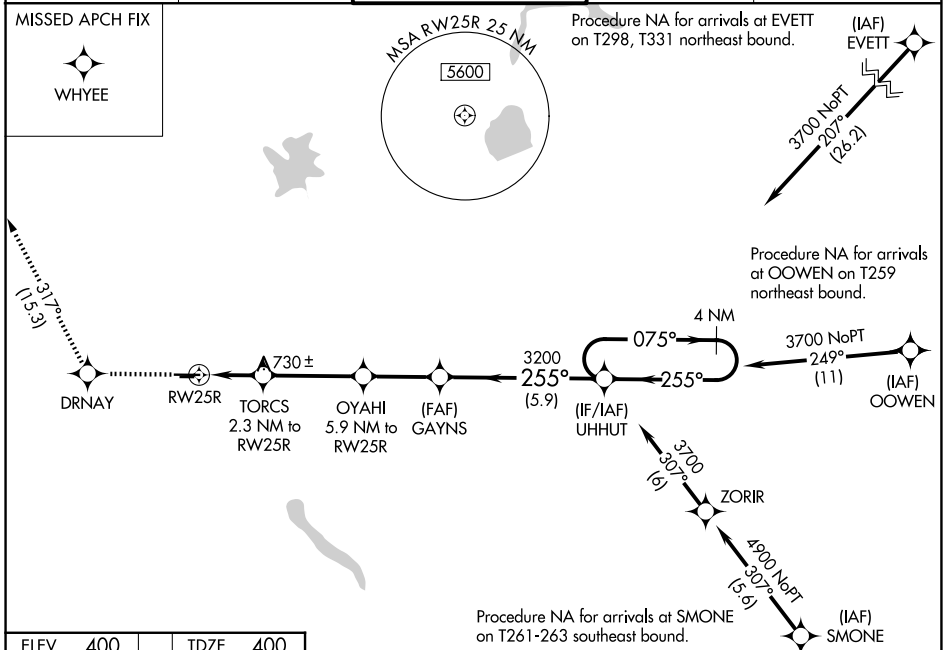
LIVERMORE MUNI (LVK)

⚠ Circling to Rwy 25L NA at night. For uncompensated Baro-VNAV systems, LNAV/VNAV NA below -5°C (23°F) or above 54°C (130°F). Circling NA north of Rwy 7L-25R. RADAR Required. DME/DME RNP-0.3 NA. For inop ALS, increase LNAV Cat C/D to 1½ SM.

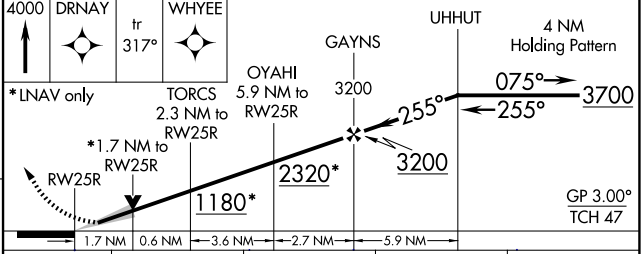
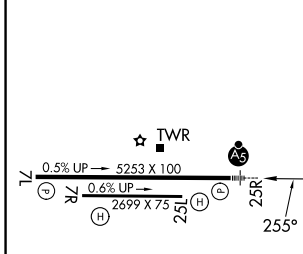
MALSR 

MISSED APPROACH: Climb to 4000 direct DRNAV and on track 317° to WHYEE.

ATIS 119.65	NORCAL APP CON 123.85 278.3	LIVERMORE TOWER * 118.1(CTAF) 239.25	GND CON 121.6	UNICOM 122.95
-----------------------	---------------------------------------	---	-------------------------	-------------------------



ELEV 400	TDZE 400
----------	----------



CATEGORY	A	B	C	D
LPV DA		600-½	200 (200-½)	
LNAV/VNAV DA		843-⅞	443 (500-⅞)	
LNAV MDA	980-½	580 (600-½)	980-1¼	580 (600-1¼)
CIRCLING	980-1	580 (600-1)	1140-2 740 (800-2)	1780-3 1380 (1400-3)

SW-2, 16 APR 2026 to 14 MAY 2026

SW-2, 16 APR 2026 to 14 MAY 2026