

RNAV 1 - DME/DME/IRU or GPS.

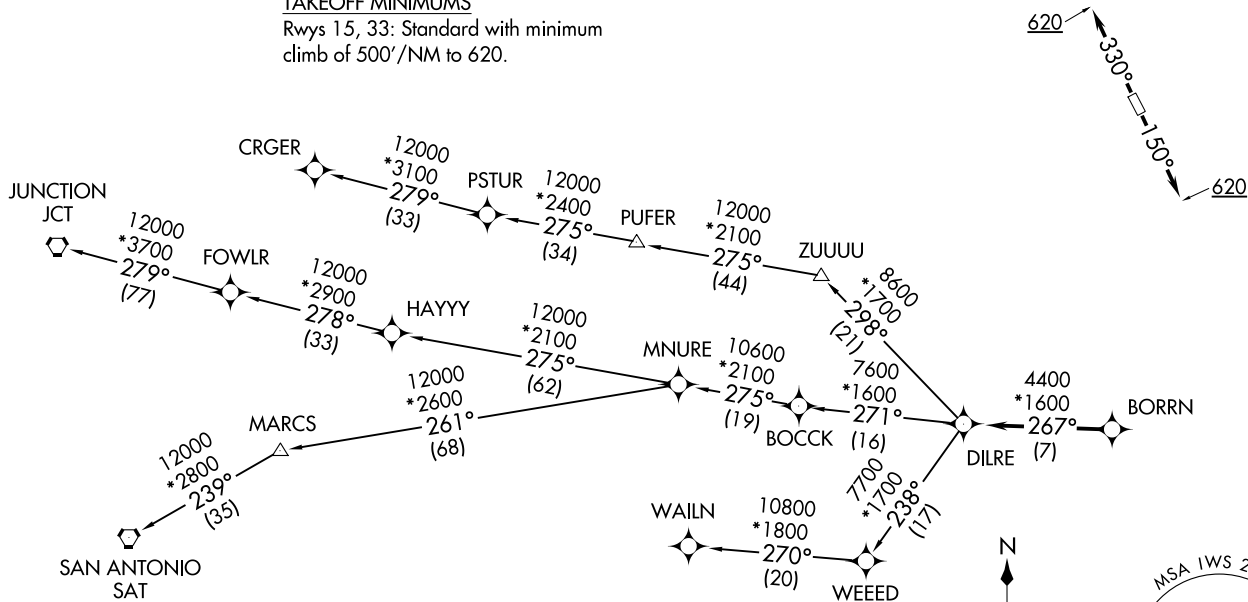
RADAR required.

**TOP ALTITUDE:
ASSIGNED BY ATC**

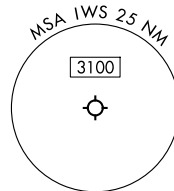
CTAF
123.05
CLNC DEL
121.15
HOUSTON DEP CON
123.8 257.7

TAKEOFF MINIMUMS

Rwys 15, 33: Standard with minimum
climb of 500'/NM to 620.



NOTE: CRGER-TRANSITION ATC assigned only
for aircraft departing 54T, AXH, EFD, GLS,
HPY, IWS, LBX, LVJ, SGR, TME, TØØ, T41.



NOTE: Chart not to scale.

(CONTINUED ON FOLLOWING PAGE)

BORRN SIX DEPARTURE (RNAV)
(BORRN6.BORRN) 30NOV23

HOUSTON, TEXAS
WEST HOUSTON (IWS)

(BORRN6.BORRN) 25051
BORRN SIX DEPARTURE (RNAV)

AL-6079 (FAA)

WEST HOUSTON (IWS)
HOUSTON, TEXAS

BORRN SIX DEPARTURE (RNAV)



DEPARTURE ROUTE DESCRIPTION

TAKEOFF RUNWAY 15: Climb heading 150° to 620, for RADAR vectors to BORRN, thence. . . .

TAKEOFF RUNWAY 33: Climb heading 330° to 620, for RADAR vectors to BORRN, thence. . . .

. . . .on track 267° to DILRE, then on (transition). Maintain ATC assigned altitude. Expect filed altitude 10 minutes after departure.

CRGER TRANSITION (BORRN6.CRGER)

JUNCTION TRANSITION (BORRN6.JCT)

MNURE TRANSITION (BORRN6.MNURE)

SAN ANTONIO TRANSITION (BORRN6.SAT)

WAILN TRANSITION (BORRN6.WAILN)

SC-5, 16 APR 2026 to 14 MAY 2026

SC-5, 16 APR 2026 to 14 MAY 2026