

EL DORADO ONE DEPARTURE

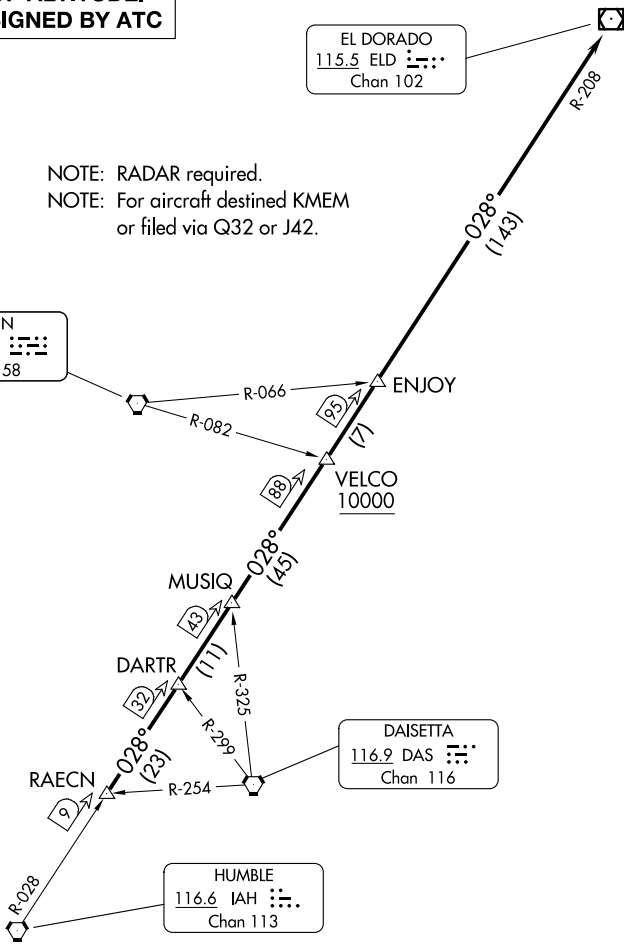
CLNC DEL
121.15
CTAF
123.05
HOUSTON DEP CON
123.8 257.7

**TOP ALTITUDE:
ASSIGNED BY ATC**

EL DORADO
115.5 ELD
Chan 102

NOTE: RADAR required.
NOTE: For aircraft destined KMEM
or filed via Q32 or J42.

LUFKIN
112.1 LFK
Chan 58



DAISETTA
116.9 DAS
Chan 116

HUMBLE
116.6 IAH
Chan 113

TAKEOFF MINIMUMS
Rwys 15, 33: Standard.

NOTE: Chart not to scale.

DEPARTURE ROUTE DESCRIPTION

TAKEOFF ALL RUNWAYS: When entering controlled airspace, climb on assigned heading for RADAR vectors to RAECN INT. Maintain ATC assigned altitude. Expect filed altitude 10 minutes after departure, thence. . . .

. . . . on IAH R-028 and the ELD R-208 to ELD VOR/DME, cross VELCO INT at or above 10000.