

(INDIE8.INDIE) 21280

AL-6079 (FAA)

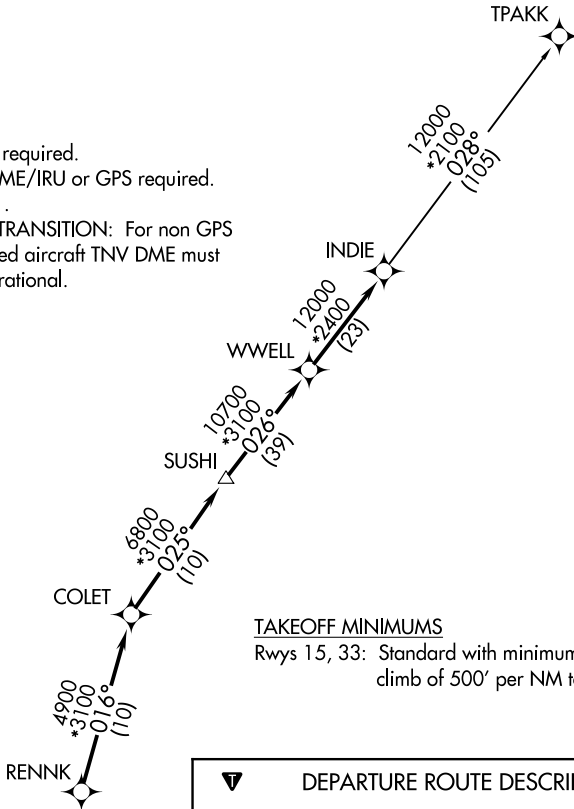
WEST HOUSTON (IWS)
HOUSTON, TEXAS

INDIE EIGHT DEPARTURE (RNAV)

CLNC DEL
121.15
CTAF
123.05
HOUSTON DEP CON
123.8 257.7

**TOP ALTITUDE:
ASSIGNED BY ATC**

- NOTE: RADAR required.
- NOTE: DME/DME/IRU or GPS required.
- NOTE: RNAV 1.
- NOTE: TPAKK TRANSITION: For non GPS equipped aircraft TNV DME must be operational.



TAKEOFF MINIMUMS

Rwys 15, 33: Standard with minimum climb of 500' per NM to 620.



DEPARTURE ROUTE DESCRIPTION

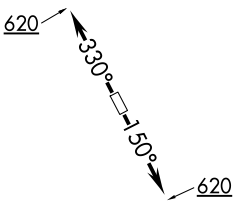
TAKEOFF RUNWAY 15: Climb on heading 150° to 620 for RADAR vectors to RENNK, then

TAKEOFF RUNWAY 33: Climb on heading 330° to 620 for RADAR vectors to RENNK, then

. . . . on track 016° to COLET, then on track 025° to SUSHI, then on track 026° to WWELL, then on track 026° to INDIE, then on (transition).

Maintain ATC assigned altitude. Expect filed altitude 10 minutes after departure.

TPAKK TRANSITION (INDIE8.TPAKK)



NOTE: Chart not to scale.

SC-5, 16 APR 2026 to 14 MAY 2026

SC-5, 16 APR 2026 to 14 MAY 2026

INDIE EIGHT DEPARTURE (RNAV)
(INDIE8.INDIE) 07OCT21

HOUSTON, TEXAS
WEST HOUSTON (IWS)