

(LFK4.LFK) 25331

AL-6079 (FAA)

WEST HOUSTON (IWS)  
HOUSTON, TEXAS

# LUFKIN FOUR DEPARTURE

HOUSTON DEP CON  
123.8 257.7  
CLNC DEL  
121.15  
CTAF  
123.05

**TOP ALTITUDE:  
ASSIGNED BY ATC**

LITTLE ROCK  
115.1 LIT  
Chan 98

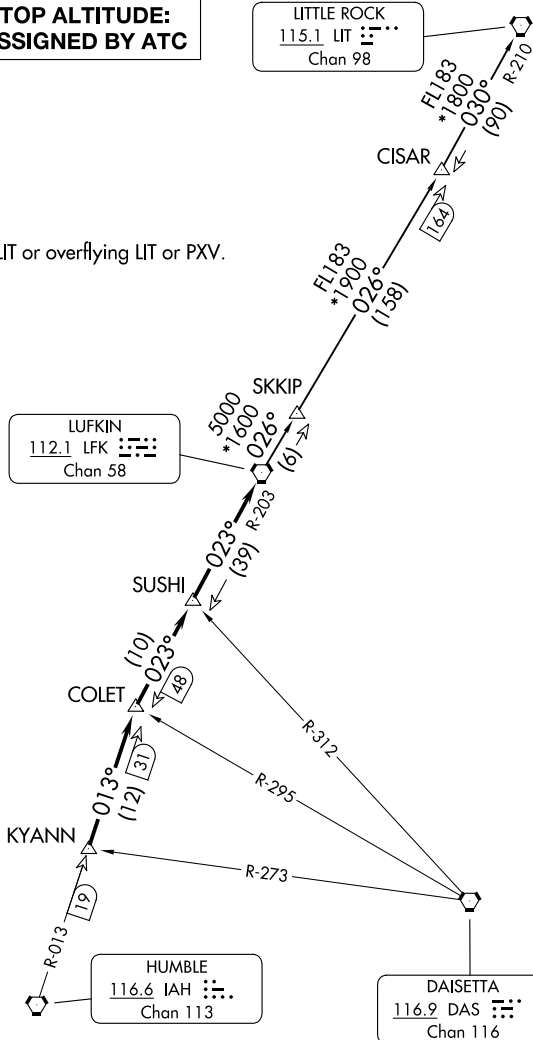
RADAR and DME required.

NOTE: For aircraft destined LIT or overflying LIT or PXV.

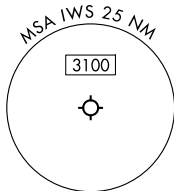
LUFKIN  
112.1 LFK  
Chan 58

HUMBLE  
116.6 IAH  
Chan 113

DAISETTA  
116.9 DAS  
Chan 116



**TAKEOFF MINIMUMS**  
Rwys 15, 33: Standard.



NOTE: Chart not to scale.

(CONTINUED ON FOLLOWING PAGE)

# LUFKIN FOUR DEPARTURE

(LFK4.LFK) 27NOV25

HOUSTON, TEXAS  
WEST HOUSTON (IWS)

SC-5, 16 APR 2026 to 14 MAY 2026

SC-5, 16 APR 2026 to 14 MAY 2026

# LUFKIN FOUR DEPARTURE



## DEPARTURE ROUTE DESCRIPTION

TAKEOFF ALL RUNWAYS: When entering controlled airspace, climb on assigned heading for RADAR vectors to KYANN INT. Maintain ATC assigned altitude. Expect filed altitude 10 minutes after departure, thence. . .

. . .on IAH R-013 to COLET INT, then on depicted route to LFK VORTAC.

LITTLE ROCK TRANSITION (LFK4.LIT): From over LFK VORTAC on LFK R-026 to CISAR, then on LIT R-210 to LIT VORTAC.

SC-5, 16 APR 2026 to 14 MAY 2026

SC-5, 16 APR 2026 to 14 MAY 2026