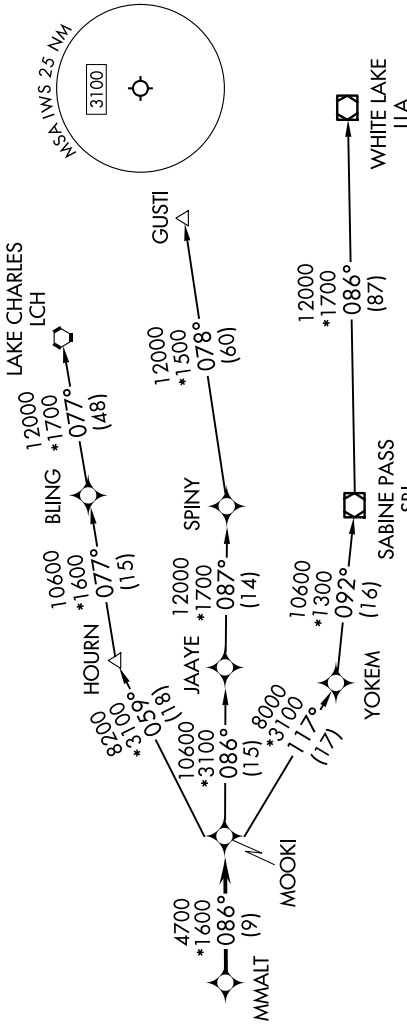


MMALT SEVEN DEPARTURE (RNAV)

SC-5, 16 APR 2026 to 14 MAY 2026

RNAV 1 - DME/DME/IRU or GPS.
RADAR required.

HOUSTON DEP CON
123.8 257.7
CINC DEL
121.15
CTAF
123.05



**TOP ALTITUDE:
ASSIGNED BY ATC**

NOTE: GUSTI and LCH Transitions ATC assigned only for aircraft departing AXH, EFD, GLS, HPY, IWS, LBX, LVJ, SGR, TME, T00, T41 and 54T.

DEPARTURE ROUTE DESCRIPTION

TAKEOFF RUNWAY 15: Climb on heading 150° to 620 for RADAR vectors to MMALT, thence. . . .

TAKEOFF RUNWAY 33: Climb on heading 330° to 620 for RADAR vectors to MMALT, thence. . . .

. . . on track 086° to MOOKI, then on (transition). Maintain ATC assigned altitude.
Expect filed altitude 10 minutes after departure.

- GUSTI TRANSITION (MMALT7.GUSTI)
- LAKE CHARLES TRANSITION (MMALT7.LCH)
- WHITE LAKE TRANSITION (MMALT7.ILA)

TAKEOFF MINIMUMS
Rwys 15, 33: Standard with minimum climb of 500'/NM to 620.

NOTE: Chart not to scale.

MMALT SEVEN DEPARTURE (RNAV)

SC-5, 16 APR 2026 to 14 MAY 2026