

# STRYA EIGHT DEPARTURE (RNAV)

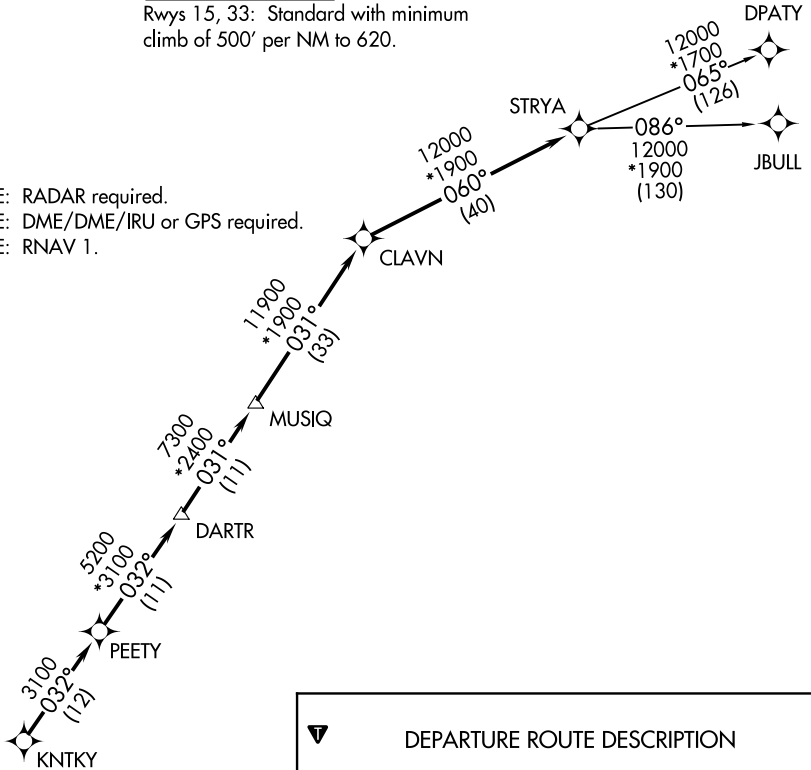
**TOP ALTITUDE: ASSIGNED BY ATC**

CTAF  
123.05  
CLNC DEL  
121.15  
HOUSTON DEP CON  
123.8 257.7

### TAKEOFF MINIMUMS

Rwys 15, 33: Standard with minimum climb of 500' per NM to 620.

- NOTE: RADAR required.
- NOTE: DME/DME/IRU or GPS required.
- NOTE: RNAV 1.



**DEPARTURE ROUTE DESCRIPTION**

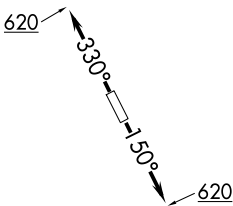
TAKEOFF RUNWAY 15: Climb on heading 150° to 620 for RADAR vectors to KNTKY, thence. . . .

TAKEOFF RUNWAY 33: Climb on heading 330° to 620 for RADAR vectors to KNTKY, thence. . . .

. . . .on track 032° to PEETY, then on track 032° to DARTR, then on track 031° to MUSIQ, then on track 031° to CLAVN, then on track 060° to STRYA, then on (transition). Maintain ATC assigned altitude. Expect filed altitude 10 minutes after departure.

DPATY TRANSITION (STRYA8.DPATY)

JBULL TRANSITION (STRYA8.JBULL)



NOTE: Chart not to scale.

SC-5, 16 APR 2026 to 14 MAY 2026

SC-5, 16 APR 2026 to 14 MAY 2026

# STRYA EIGHT DEPARTURE (RNAV)