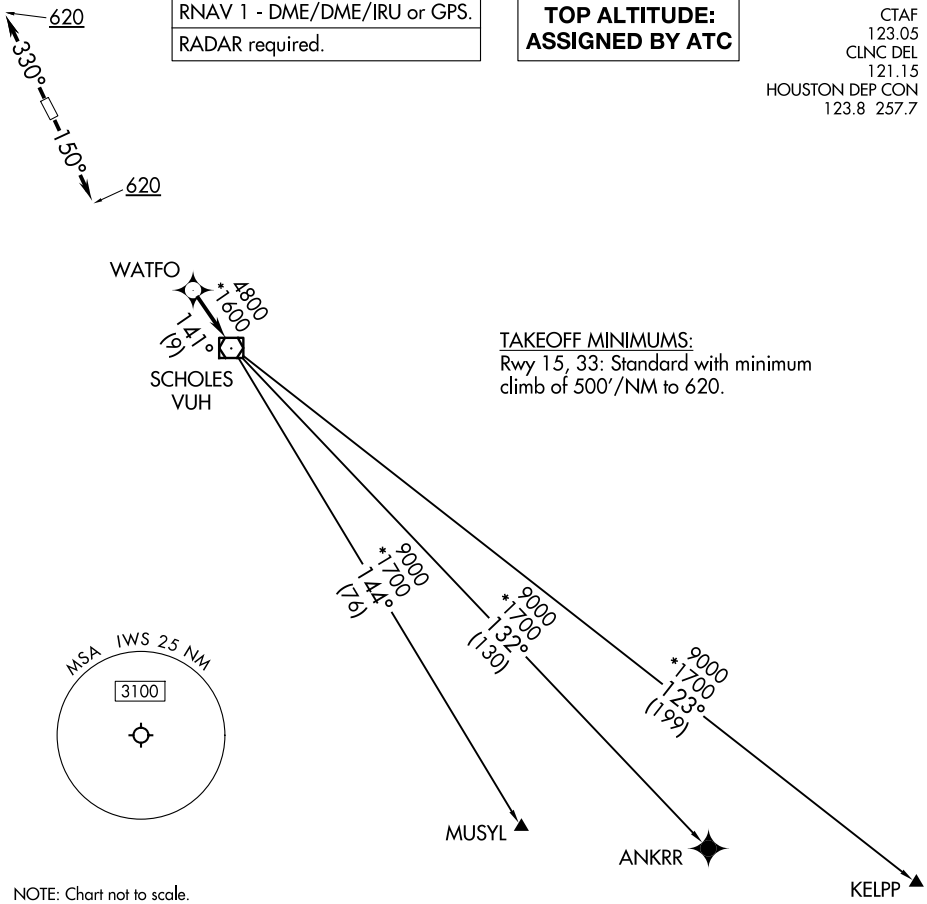


WATFO SIX DEPARTURE (RNAV)

RNAV 1 - DME/DME/IRU or GPS.
RADAR required.

**TOP ALTITUDE:
ASSIGNED BY ATC**

CTAF
123.05
CLNC DEL
121.15
HOUSTON DEP CON
123.8 257.7



TAKEOFF MINIMUMS:
Rwy 15, 33: Standard with minimum climb of 500' /NM to 620.

SC-5, 16 APR 2026 to 14 MAY 2026

SC-5, 16 APR 2026 to 14 MAY 2026

NOTE: Chart not to scale.

DEPARTURE ROUTE DESCRIPTION

TAKEOFF RUNWAY 15: Climb on heading 150° to 620, for RADAR vectors to WATFO, thence. . . .

TAKEOFF RUNWAY 33: Climb on heading 330° to 620, for RADAR vectors to WATFO, thence. . . .

. . . .on track 141° to VUH VOR/DME, then on (transition). Maintain ATC assigned altitude. Expect filed altitude 10 minutes after departure.

ANKRR TRANSITION (WATFO6.ANKRR)

KELPP TRANSITION (WATFO6.KELPP)

MUSYL TRANSITION (WATFO6.MUSYL)

WATFO SIX DEPARTURE (RNAV)