

(BEAVY6.BEAVY) 24081

AL-6081 (FAA)

GASTONIA MUNI (AKH)
GASTONIA, NORTH CAROLINA

BEAVY SIX DEPARTURE (RNAV)

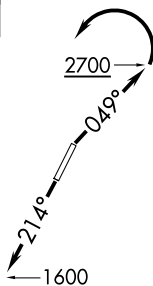
CHARLOTTE DEP CON
120.05 257.2
ASOS
135.725
CLNC DEL
127.2
UNICOM (CTAF)
123.0

RNAV 1-DME/DME/IRU or GPS.

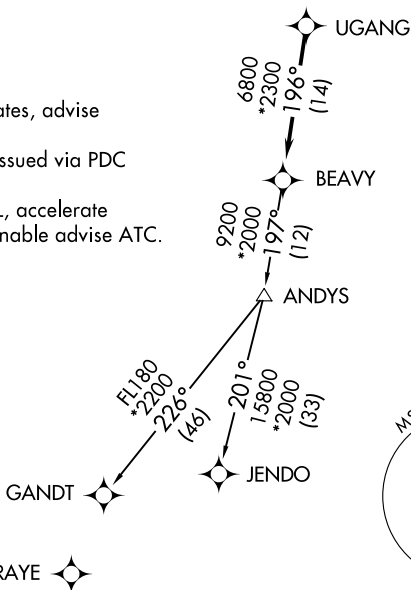
RADAR required.

**TOP ALTITUDE:
3000**

TAKEOFF MINIMUMS
Rwys 3, 21: Standard.



- NOTE: For turbo jets only.
- NOTE: If unable to accept climb rates, advise ATC on initial contact.
- NOTE: Transponder code will be issued via PDC or Charlotte CLNC DEL.
- NOTE: Upon reaching 10000 MSL, accelerate to and maintain 280K, if unable advise ATC.



NOTE: Chart not to scale.

DEPARTURE ROUTE DESCRIPTION

TAKEOFF RUNWAY 3: Climb on heading 049° to 2700 before turning left, then on heading assigned by ATC, thence...

TAKEOFF RUNWAY 21: Climb on heading 214° to 1600 before proceeding north, then on heading assigned by ATC, thence...

...on RADAR vectors to UGANG, then on track 196° to BEAVY. Then on assigned transition. Maintain 3000, expect clearance to filed altitude within 10 minutes after departure.

GANDT TRANSITION (BEAVY6.GANDT)

JENDO TRANSITION (BEAVY6.JENDO)

BEAVY SIX DEPARTURE (RNAV)

(BEAVY6.BEAVY) 21MAR24

GASTONIA, NORTH CAROLINA
GASTONIA MUNI (AKH)

SE-2, 16 APR 2026 to 14 MAY 2026

SE-2, 16 APR 2026 to 14 MAY 2026