

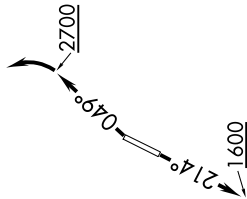
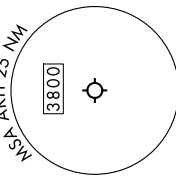
KILNS FIVE DEPARTURE (RNAV)

SE-2, 16 APR 2026 to 14 MAY 2026

CHARLOTTE DEP CON
120.05 257.2
ASOS
135.725
CLNC DEL
127.2
UNICOM (CTAF)
123.0

RNAV 1 - DME/DME/IRU or GPS.
RADAR required.

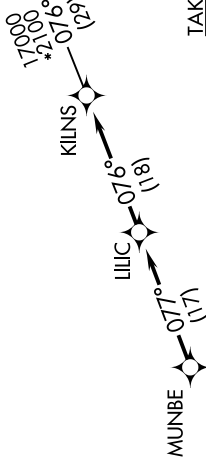
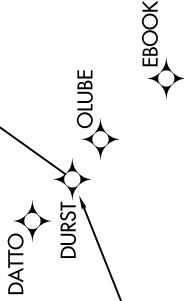
NOTE: For turbopets only.
NOTE: Transponder code will be issued via PDC or Charlotte CLNC DEL.
NOTE: Upon reaching 10000 MSL, accelerate to and maintain 280K, if unable advise ATC.
NOTE: If unable to accept climb rates, advise ATC on initial contact.



TOP ALTITUDE:
3000



FL180
049°
*3100
(3)



TAKEOFF MINIMUMS
Rwys 3, 21: Standard.

NOTE: Chart not to scale.

DEPARTURE ROUTE DESCRIPTION

TAKEOFF RUNWAY 3: Climb on heading 049° to 2700 before turning left, then on heading assigned by ATC, thence
TAKEOFF RUNWAY 21: Climb on heading 21.4° to 1600 before proceeding north, then on heading assigned by ATC, thence
. . . . on RADAR vectors to MUNBE, then on depicted route to KILNS, then on AUIII Transition. Maintain 3000. Expect clearance to filed altitude within 10 minutes after departure.

AUIII TRANSITION (KILNS5.AUIII)

KILNS FIVE DEPARTURE (RNAV)

SE-2, 16 APR 2026 to 14 MAY 2026