

APP CRS	Rwy Ldg	5001
173°	TDZE	892
	Apt Elev	892

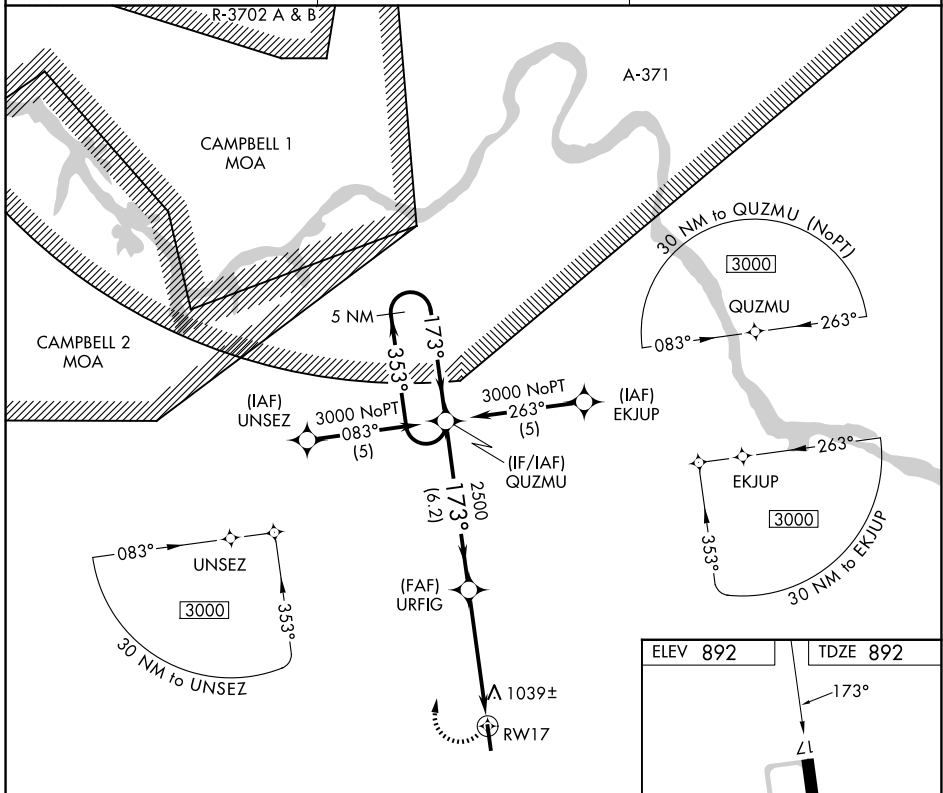
RNAV (GPS) RWY 17

DICKSON MUNI (M02)

⚠ Night Landing: Rwy 35 NA. DME/DME RNP-0.3 NA. Helicopter visibility reduction below 3/4 SM NA. When local altimeter setting not received, use Nashville Intl altimeter setting and increase all MDA 140 feet and increase LNAV Cat C and Circling Cat B visibility 1/4 mile and LNAV Cat D and Circling Cat C/D 1/2 mile.

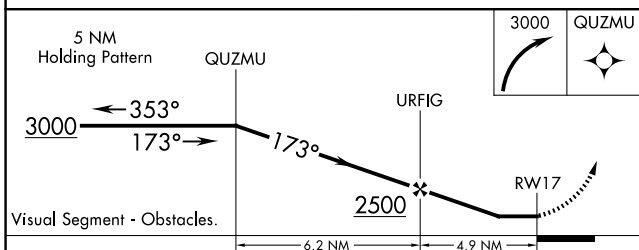
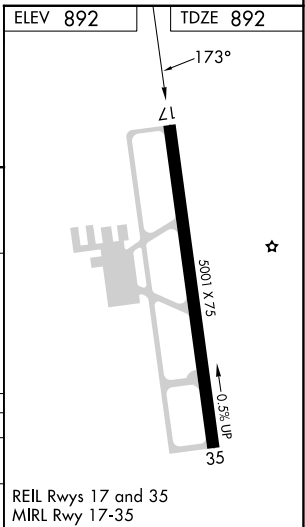
⚠ NA MISSED APPROACH: Climbing right turn to 3000 direct QUZMU and hold.

AWOS-3 123.875	NASHVILLE APP CON 119.35 372.0	UNICOM 122.8 (CTAF)
--------------------------	--	-------------------------------



SE-1, 16 APR 2026 to 14 MAY 2026

SE-1, 16 APR 2026 to 14 MAY 2026



CATEGORY	A	B	C	D
LNAV MDA	1300-1	408 (500-1)	1300-1 1/8	408 (500-1 1/8)
CIRCLING	1420-1 528 (600-1)	1560-1 668 (700-1)	1560-1 3/4 668 (700-1 3/4)	1560-2 668 (700-2)

REIL Rwy 17 and 35
MIRL Rwy 17-35