

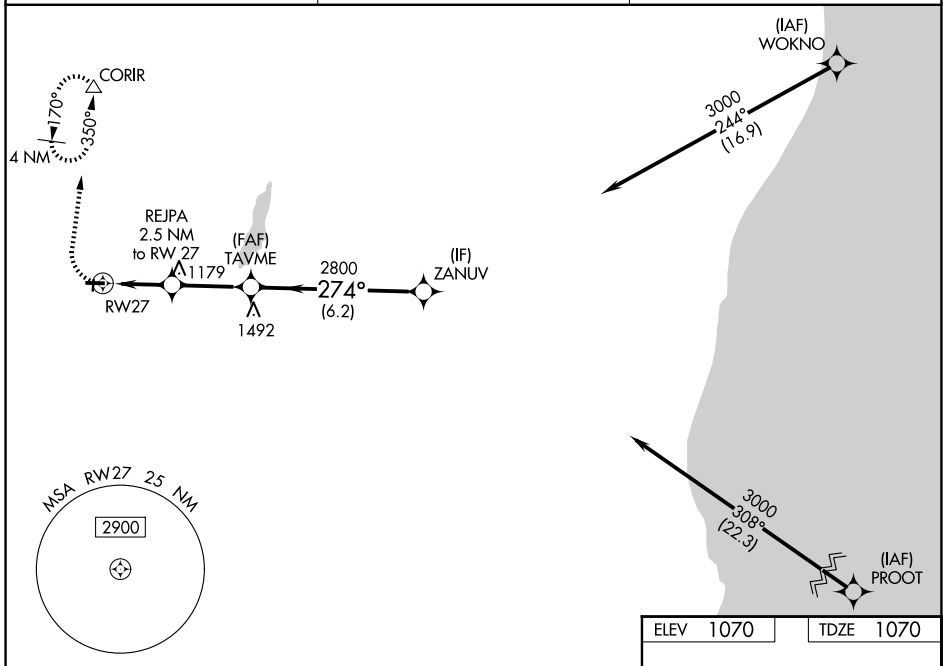
WAAS CH <b>86943</b> <b>W27A</b>	APP CRS <b>274°</b>	Rwy Ldg TDZE Apf Elev	<b>3401</b> <b>1070</b> <b>1070</b>
--	------------------------	-----------------------------	---

# RNAV (GPS) RWY 27

HARTFORD MUNI (HXF)

RNP APCH.	<p>▼ Circling NA to Rwys 18 and 36.                  ▲ NA Rwy 27 helicopter visibility reduction below ¾ SM NA.                  Baro-VNAV NA. Use West Bend altimeter setting.</p>	MISSED APPROACH: Climb to 1700 then climbing right turn to 3000 direct CORIR and hold, continue climb-in-hold to 3000.
-----------	---	--

ETB AWOS-3 <b>120.0</b>	MILWAUKEE APP CON <b>125.35 307.0</b>	UNICOM <b>123.0 (CTAF) 0</b>
----------------------------	--	---------------------------------



EC-3, 16 APR 2026 to 14 MAY 2026

EC-3, 16 APR 2026 to 14 MAY 2026

	ELEV 1070	TDZE 1070
	1700	3000
	GP 3.00°	TCH 40
	ZANUV	TAVME
	3000	2800
	274°	2800
	6.2 NM	2.8 NM
	REJPA 2.5 NM to RW27	RW27
	*1900	*LNAV only.
CATEGORY	A	B
LPV DA	1374-7/8	304 (400-7/8)
LNAV/VNAV DA	1415-1	345 (400-1)
LNAV MDA	1540-1	470 (500-1)
CIRCLING	1560-1	490 (500-1)

