

LOC/DME I-DSY <b>110.1</b> Chan <b>38</b>	APP CRS <b>011°</b>	Rwy Ldg TDZE <b>253</b> Apt Elev <b>265</b>
---	------------------------	---


# ILS or LOC RWY 1

SEARCY RGNL (SRC)

DME required.

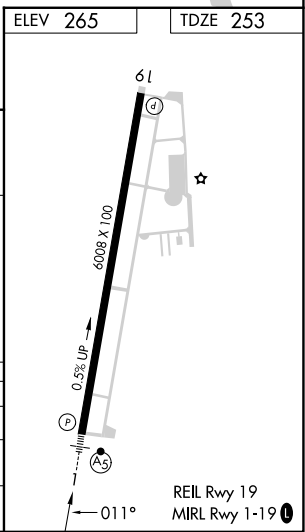
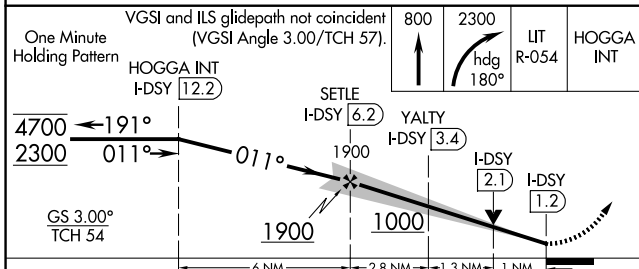
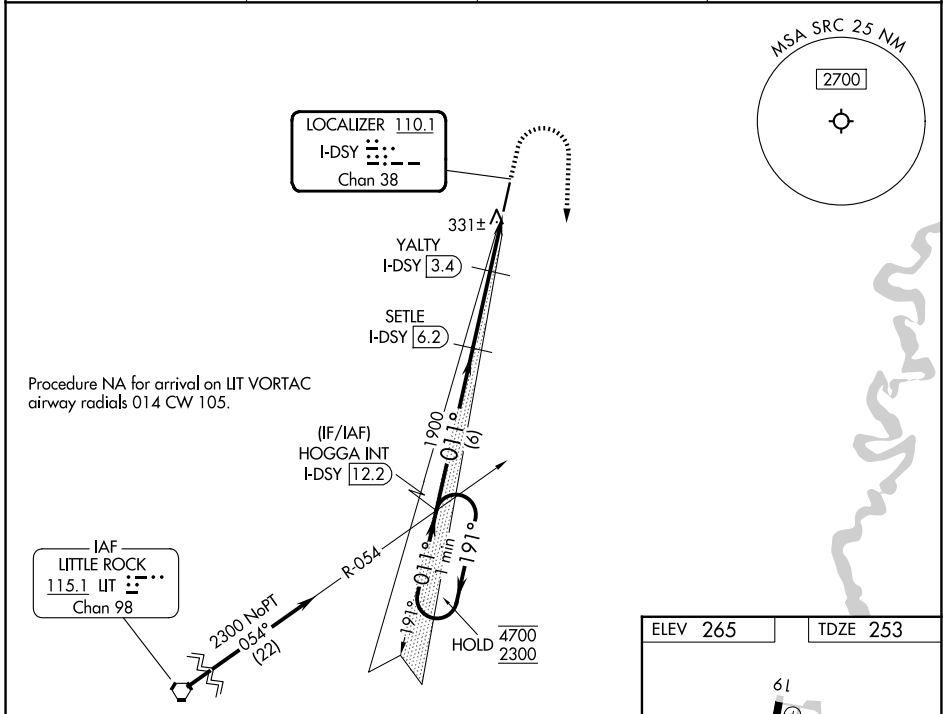
**∇** Circling NA for Cats B and C west of Rwy 1-19.  
**▲** For inop ALS, increase S-LOC 1 Cat C visibility to 1 SM.

MALSRL



MISSED APPROACH: Climb to 800 then climbing right turn to 2300 on heading 180° and on LIT VORTAC R-054 to HOGGA INT/I-DSY 12.2 DME and hold.

AWOS-3PT <b>128.325</b>	LITTLE ROCK APP CON <b>119.75 291.775</b>	CLNC DEL <b>119.75</b>	UNICOM <b>122.7 (CTAF) 0</b>
----------------------------	--	---------------------------	---------------------------------



CATEGORY	A	B	C	D
S-ILS 1	453-1/2 200 (200-1/2)			NA
S-LOC 1	600-1/2	347 (400-1/2)	600-5/8 347 (400-5/8)	NA
CIRCLING	760-1	495 (500-1)	780-1/2 515 (600-1/2)	NA

SC-1, 16 APR 2026 to 14 MAY 2026

SC-1, 16 APR 2026 to 14 MAY 2026