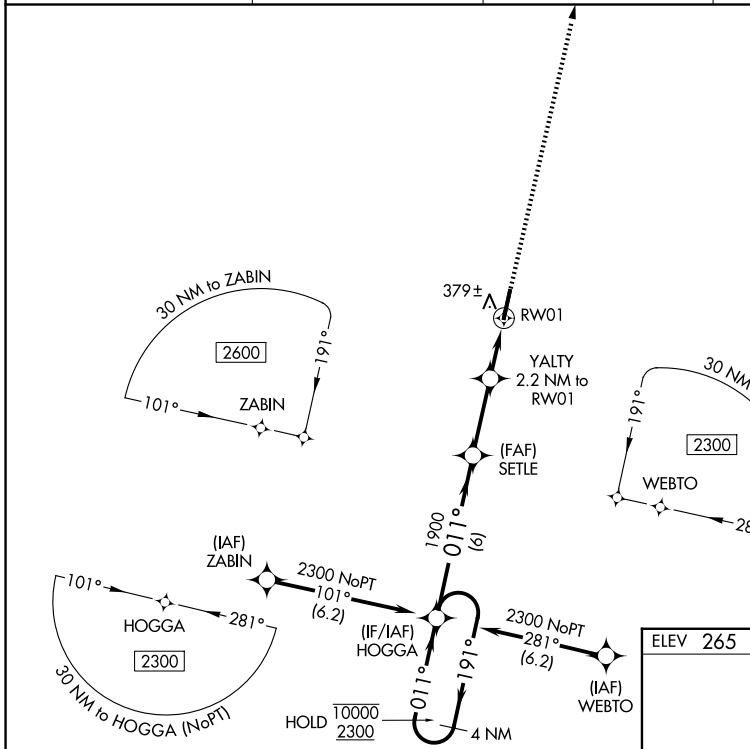
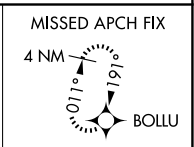


WAAS CH 81824 W01A	APP CRS 011°	Rwy Ldg TDZE 253 Apt Elev 265	6008
--	------------------------	---	-------------

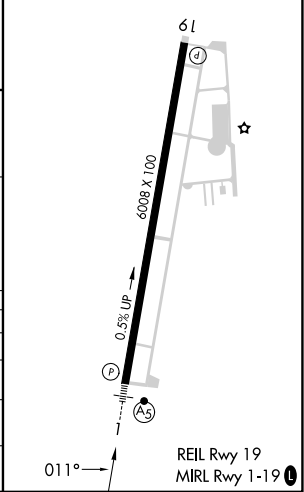
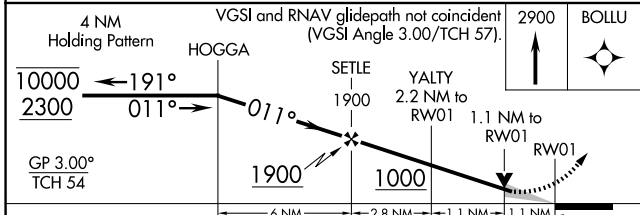
RNAV (GPS) RWY 1

SEARCY RGNL (SRC)

RNP APCH - GPS.		MALSR	MISSED APPROACH: Climb to 2900 direct BOLLU and hold, continue climb-in-hold to 2900.
<p>⚠ For uncompensated Baro-VNAV systems, LNAV/VNAV NA below -15°C or above 54°C. Circling NA for Cats B and C west of Rwy 1-19. For inop ALS, increase LNAV/VNAV all Cats visibility to ½ SM.</p>			
AWOS-3PT 128.325	LITTLE ROCK APP CON 119.75 291.775	CLNC DEL 119.75	UNICOM 122.7 (CTAF) 0



ELEV 265	TDZE 253
----------	----------



CATEGORY	A	B	C	D
LPV DA	453-½	200 (200-½)		NA
LNAV/VNAV DA	537-½	284 (300-½)		NA
LNAV MDA	640-½	387 (400-½)	640-⅝ 387 (400-⅝)	NA
CIRCLING	760-1	495 (500-1)	780-1½ 515 (600-1½)	NA

SC-1, 16 APR 2026 to 14 MAY 2026

SC-1, 16 APR 2026 to 14 MAY 2026