

WAAS CH <b>53740</b> <b>W20A</b>	APP CRS <b>201°</b>	Rwy Idg TDZE <b>117</b> Apt Elev <b>117</b>	<b>4700</b>
--	------------------------	---	-------------

# RNAV (GPS) RWY 20

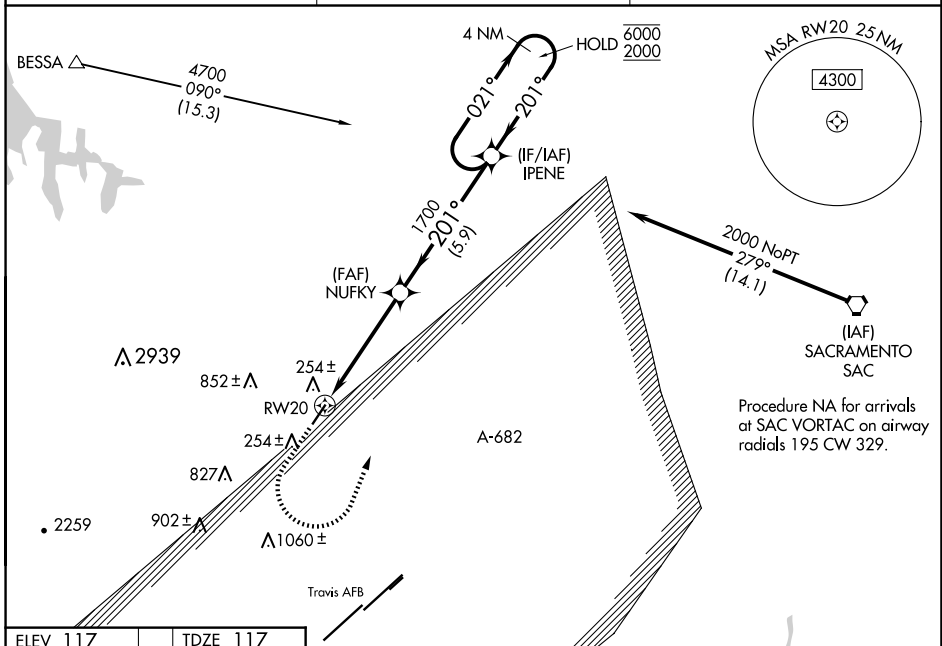
NUT TREE (VCB)

RNP APCH.

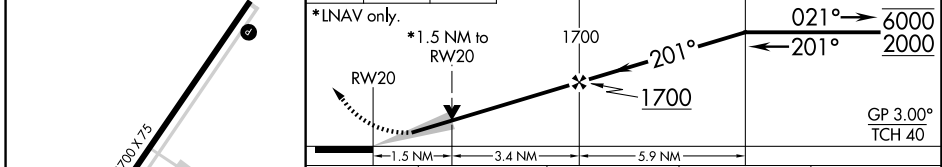
**⚠** Circling NA west of Rwy 2-20. Circling Rwy 2 NA at night.  
**⚠** For uncompensated Baro-VNAV systems, LNAV/VNAV NA below -3°C or above 54°C.

MISSED APPROACH: (Do not exceed 220K until IPENE) Climb to 580 then climbing left turn to 2100 direct IPENE and hold.  
 # Missed approach requires minimum climb of 229 feet per NM to 1300.

ASOS <b>134.75</b>	TRAVIS APP CON <b>128.4 281.45</b>	CTAF <b>122.85</b> <b>0</b>
-----------------------	---------------------------------------	--------------------------------



ELEV 117	TDZE 117	580	2100	IPENE	VGSI and RNAV glidepath not coincident (VGSI Angle 3.75/TCH 27).	IPENE	4 NM Holding Pattern
----------	----------	-----	------	-------	--	-------	----------------------



CATEGORY	A	B	C	D
LPV DA#		367-3/4	250 (300-3/4)	
LPV DA		384-7/8	267 (300-7/8)	
LNAV/VNAV DA		614-1-3/8	497 (500-1-3/8)	
LNAV MDA	720-1	603 (700-1)	720-1 3/4	603 (700-1 3/4)
<b>C</b> CIRCLING	720-1	603 (700-1)	960-2 1/2 843 (900-2 1/2)	1480-3 1363 (1400-3)

SW-2, 16 APR 2026 to 14 MAY 2026

SW-2, 16 APR 2026 to 14 MAY 2026