

WAAS CH 99727 W28A	APP CRS 277°	Rwy Ldg TDZE Apt Elev	4004 637 640
--	------------------------	-----------------------------	---

RNAV (GPS) RWY 28

CHEBOYGAN COUNTY (SLH)

RNP APCH.

▼ Night landing Rwy 17, 35 NA. Baro-VNAV NA when using Pellston altimeter setting. For uncompensated Baro-VNAV systems, LNAV/VNAV NA below -16°C (4°F) or above 54°C (130°F). Helicopter visibility reduction below 3/4 SM NA. When local altimeter setting not received, use Pellston altimeter setting; increase all DA 41 feet and all MDA 60 feet and increase LNAV/VNAV all Cats visibility 1/4 SM and LNAV Cat C visibility 1/8 SM.

MISSED APPROACH: Climb to 2600 direct CATAP and on track 282° to JATRA and hold.

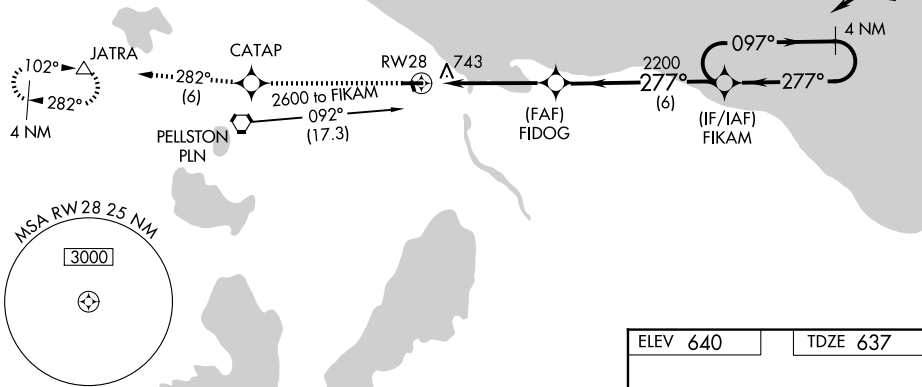
AWOS-3P
118.175

MINNEAPOLIS CENTER
134.6 354.05

UNICOM
122.8 (CTAF) 0

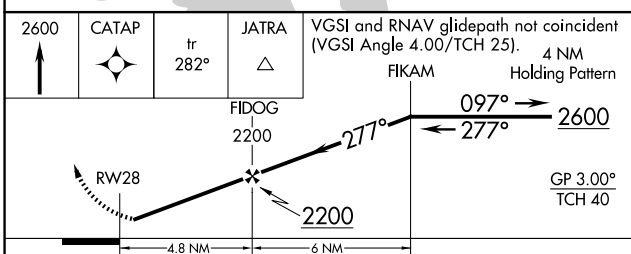
Procedure NA for arrivals on PLN VORTAC airway radials 023 CW 170.

Procedure NA for arrivals at REEFY on V45 northbound.



EC-1, 16 APR 2026 to 14 MAY 2026

EC-1, 16 APR 2026 to 14 MAY 2026



ELEV 640	TDZE 637
----------	----------

REIL Rws 10 and 28 **0**
MIRL Rwy 10-28 and 17-35 **0**

CATEGORY	A	B	C	D
LPV DA		887-1 250 (300-1)		NA
LNAV/VNAV DA		953-1 316 (400-1)		NA
LNAV MDA	1060-1 423 (500-1)		1060-1 1/4 423 (500-1 1/4)	NA
CIRCLING	1140-1 500 (500-1)		1140-1 1/2 500 (500-1 1/2)	NA