

WAAS CH <b>77809</b> <b>W16A</b>	APP CRS <b>163°</b>	Rwy Idg <b>4301</b> TDZE <b>1803</b> Apt Elev <b>1803</b>
--	------------------------	---

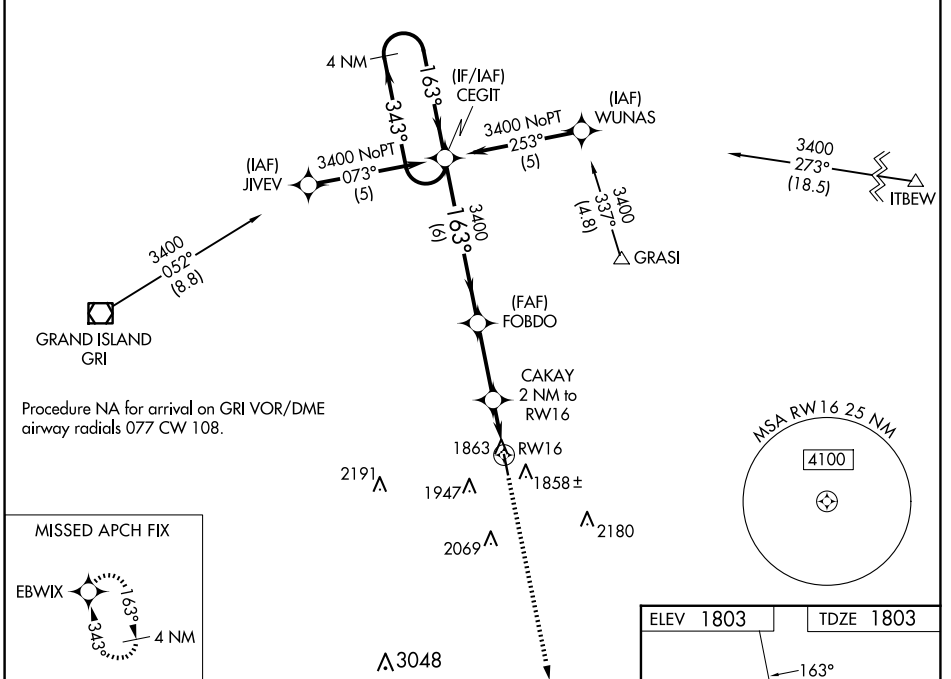
# RNAV (GPS) RWY 16

AURORA MUNI/AL POTTER FLD (AUH)

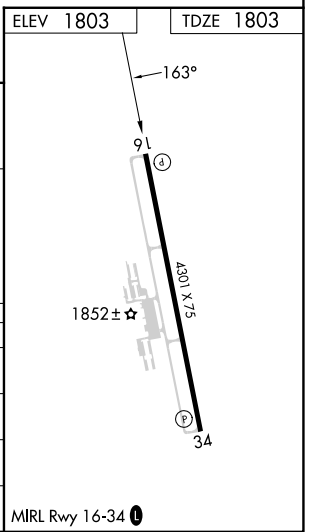
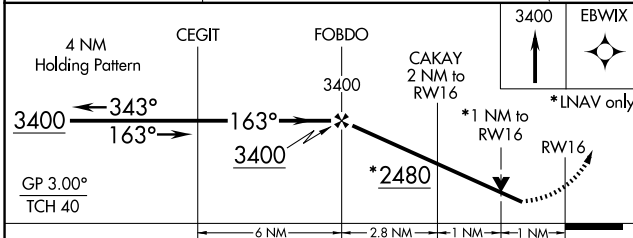
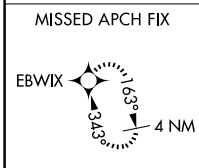
**⚠** Baro-VNAV NA when using Grand Island altimeter setting. For uncompensated Baro-VNAV systems, LNAV/VNAV NA below -18°C (0°F) or above 54°C (130°F). DME/DME RNP-0.3 NA. Visibility reduction by helicopters NA. When local altimeter setting not received, use Grand Island altimeter setting and increase all DA 41 feet and all MDA 60 feet and LPV all Cats visibility ¼ mile. VDP NA when using Grand Island altimeter setting.

**MISSED APPROACH:**  
Climb to 3400 direct EBWIX and hold.

AWOS-3 <b>121.225</b>	MINNEAPOLIS CENTER <b>119.4 278.8</b>	UNICOM <b>122.8 (CTAF) 0</b>
--------------------------	--	---------------------------------



Procedure NA for arrival on GRI VOR/DME airway radials 077 CW 108.



CATEGORY	A	B	C	D
LPV DA	2102-1	299 (300-1)		NA
LNAV/VNAV DA	2133-1¼	330 (400-1¼)		NA
LNAV MDA	2160-1	357 (400-1)		NA
<b>C</b> CIRCLING	2300-1 497 (500-1)	2340-1 537 (600-1)		NA

NC-2, 16 APR 2026 to 14 MAY 2026

NC-2, 16 APR 2026 to 14 MAY 2026