

APP CRS	Rwy Ldg	3800
180°	TDZE	437
	Apt Elev	437

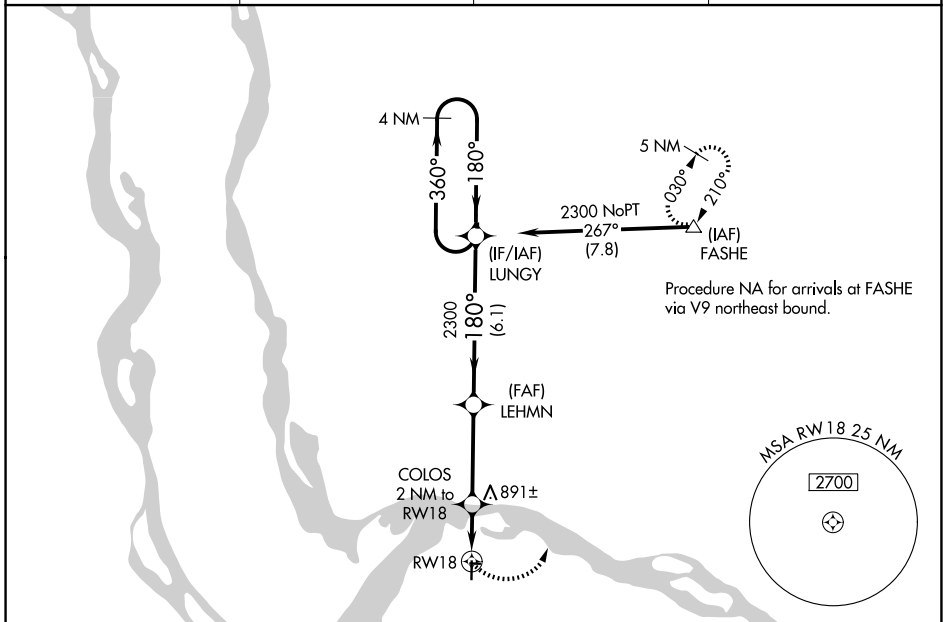
RNAV (GPS) RWY 18

ST CHARLES COUNTY RGNL/SMARTT FLD (S/E/T)

⚠ DME/DME RNP-0.3 NA. When local altimeter setting not received, use St Louis Lambert Intl altimeter setting and increase all MDAs 60 feet; increase visibility Cat C ¼ SM. VDP NA with St Louis Lambert Intl altimeter setting.

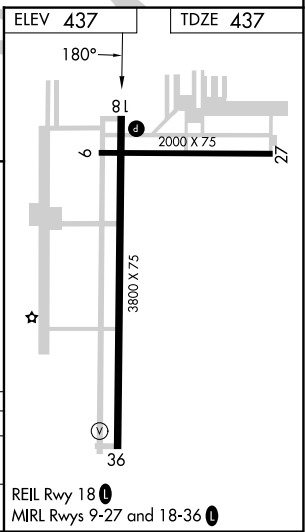
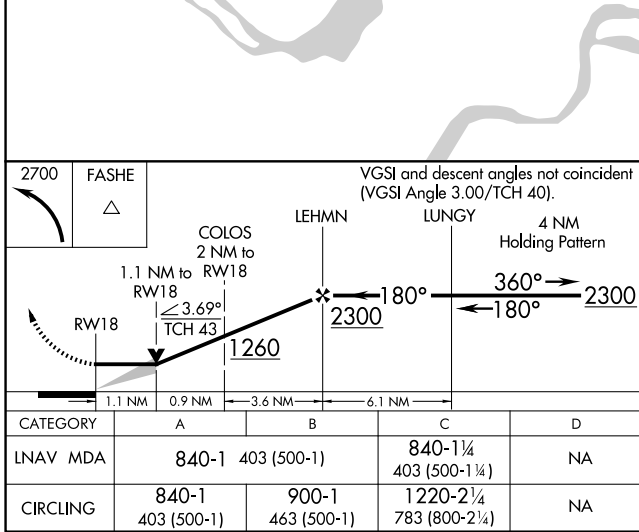
⚠ MISSED APPROACH: Climbing left turn to 2700 direct FASHE and hold.

ASOS 118.075	ST. LOUIS APP CON 124.2 353.9	CLNC DEL 121.6	UNICOM 122.7 (CTAF) 📻
------------------------	---	--------------------------	--



NC-3, 16 APR 2026 to 14 MAY 2026

NC-3, 16 APR 2026 to 14 MAY 2026



REIL Rwy 18 **📻**
MIRL Rwy 9-27 and 18-36 **📻**