

(RACER8.MCI) 25051

RACER EIGHT DEPARTURE

AL-6104 (FAA)

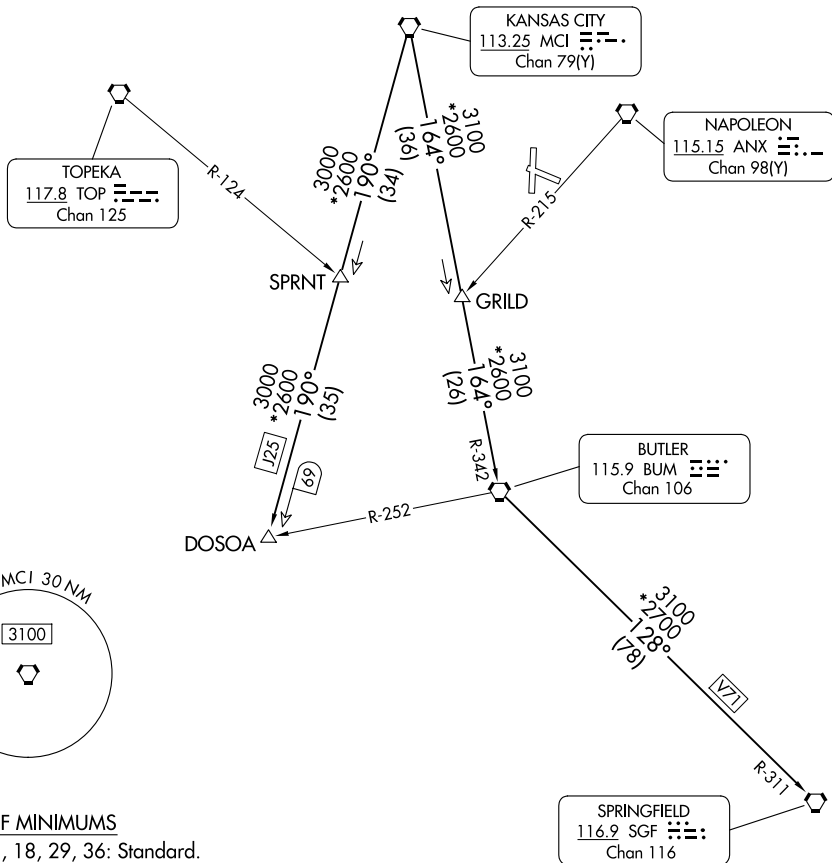
KANSAS CITY/LEE'S SUMMIT RGNL (LXT)

LEE'S SUMMIT, MISSOURI

KANSAS CITY DEP CON
118.4 307.35
CLNC DEL
118.45

RADAR required.

TOP ALTITUDE:
10000



TAKEOFF MINIMUMS

Rwys 11, 18, 29, 36: Standard.

NOTE: Chart not to scale.

DEPARTURE ROUTE DESCRIPTION

TAKEOFF ALL RUNWAYS: Climb on assigned heading for RADAR vectors to appropriate route. Maintain 10000 or as assigned by ATC, expect filed altitude 10 minutes after departure.

BUTLER TRANSITION (RACER8.BUM): From over MCI VORTAC on MCI R-164 and BUM R-342 to BUM VORTAC.

DOSOA TRANSITION (RACER8.DOSOA): From over MCI VORTAC on MCI R-190 to DOSOA.

SPRINGFIELD TRANSITION (RACER8.SGF): From over MCI VORTAC on MCI R-164 and BUM R-342 to BUM VORTAC, then on BUM R-128 and SGF R-311 to SGF VORTAC.

RACER EIGHT DEPARTURE

(RACER8.MCI) 05OCT23

LEE'S SUMMIT, MISSOURI
KANSAS CITY/LEE'S SUMMIT RGNL (LXT)

NC-3, 16 APR 2026 to 14 MAY 2026

NC-3, 16 APR 2026 to 14 MAY 2026