

VORTAC ANX 115.15 Chan 98(Y)	APP CRS 229°	Rwy Ldg TDZE Apt Elev 1004	N/A N/A
--	------------------------	--	--------------------------

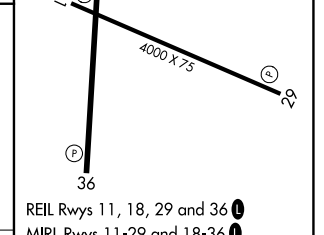
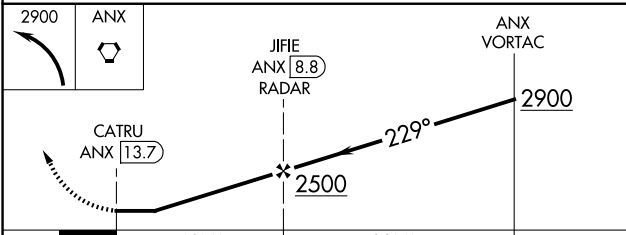
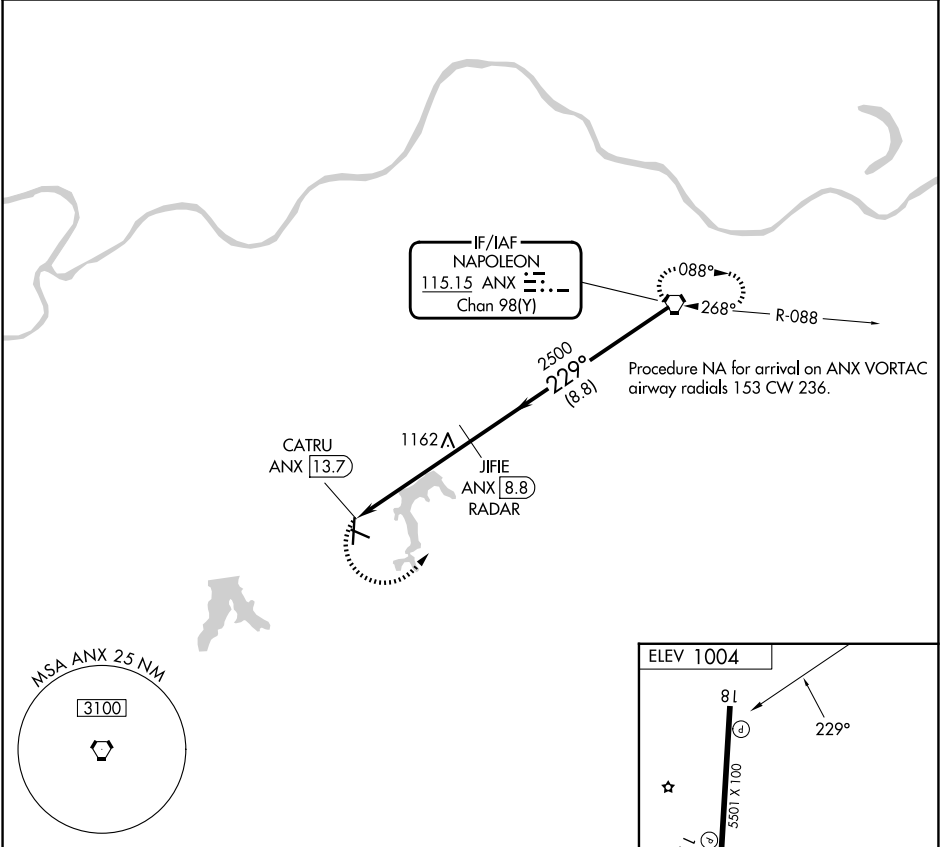
VOR-A

KANSAS CITY/LEE'S SUMMIT RGNL (LX'T)

⚠ DME or RADAR required. When local altimeter setting not received, use Kansas City Downtown/Wheeler Fld altimeter setting and increase all MDA 80 feet, and Cat C and D visibility ¼ mile.

⚠ MISSED APPROACH: Climbing left turn to 2900 direct ANX VORTAC and hold.

ASOS 124.175	KANSAS CITY APP CON 118.4 307.35	UNICOM 122.8 (CTAF) ①
------------------------	--	---------------------------------



	CATRU ANX [13.7]		JIFIE ANX [8.8] RADAR	ANX VORTAC	2900												
	4.9 NM		8.8 NM														
CATEGORY	A	B	C	D	FAF to MAP 4.9 NM												
CIRCLING	1440-1 436 (500-1)	1540-1 536 (600-1)	1780-2¼ 776 (800-2¼)	1780-2½ 776 (800-2½)	<table border="1"> <tr> <td>Knots</td> <td>60</td> <td>90</td> <td>120</td> <td>150</td> <td>180</td> </tr> <tr> <td>Min:Sec</td> <td>4:54</td> <td>3:16</td> <td>2:27</td> <td>1:58</td> <td>1:38</td> </tr> </table>	Knots	60	90	120	150	180	Min:Sec	4:54	3:16	2:27	1:58	1:38
Knots	60	90	120	150	180												
Min:Sec	4:54	3:16	2:27	1:58	1:38												

VOR-A

NC-3, 16 APR 2026 to 14 MAY 2026

NC-3, 16 APR 2026 to 14 MAY 2026