

(ILEXY4.ILEXY) 23166

# ILEXY FOUR DEPARTURE (RNAV) AL-6111 (FAA)

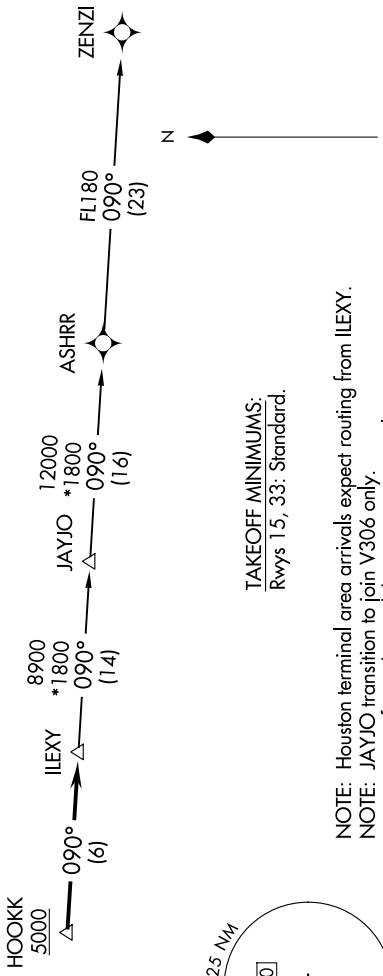
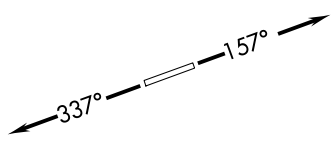
LAGO VISTA TX/RUSTY ALLEN (RYW)  
LAGO VISTA, TEXAS

SC-3, 16 APR 2026 to 14 MAY 2026

AWOS-3PT  
119.375  
UNICOM (CTAF)  
122.725  
AUSTIN DEP CON  
119.0 370.85

**TOP ALTITUDE:  
ASSIGNED BY ATC**

RNAV 1 - DME/DME/IRU or GPS.  
RADAR required.



**TAKEOFF MINIMUMS:**  
Rwys 15, 33: Standard.

**NOTE:** Houston terminal area arrivals expect routing from ILEXY.  
**NOTE:** JAYJO transition to join V306 only.  
**NOTE:** Aircraft not destined the Houston terminal area or joining V306 must file the ZENZI transition.

NOTE: Chart not to scale.

## DEPARTURE ROUTE DESCRIPTION

**TAKEOFF RUNWAY 15:** Climb on heading 157° or as assigned by ATC for vectors to cross HOOKK at or above 5000, thence. . . .  
**TAKEOFF RUNWAY 33:** Climb on heading 337° or as assigned by ATC for vectors to cross HOOKK at or above 5000, thence. . . .  
 . . . on track 090° to ILEXY, then on transition. Maintain altitude assigned by ATC. Expect filed altitude 10 minutes after departure.

JAYJO TRANSITION (ILEXY4.JAYJO)  
 ZENZI TRANSITION (ILEXY4.ZENZI)

# ILEXY FOUR DEPARTURE (RNAV) (ILEXY4.ILEXY) 15JUN23

LAGO VISTA, TEXAS  
LAGO VISTA TX/RUSTY ALLEN (RYW)

SC-3, 16 APR 2026 to 14 MAY 2026