

WAAS CH <b>45915</b> W09A	APP CRS <b>094°</b>	Rwy Idg <b>5502</b> TDZE <b>141</b> Apr Elev <b>141</b>
---------------------------------	------------------------	---

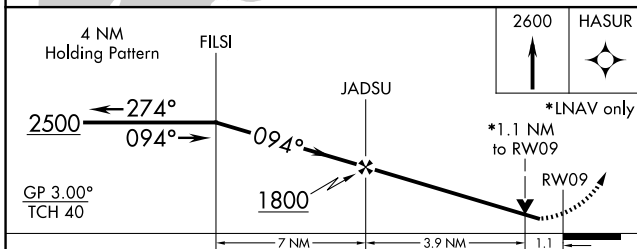
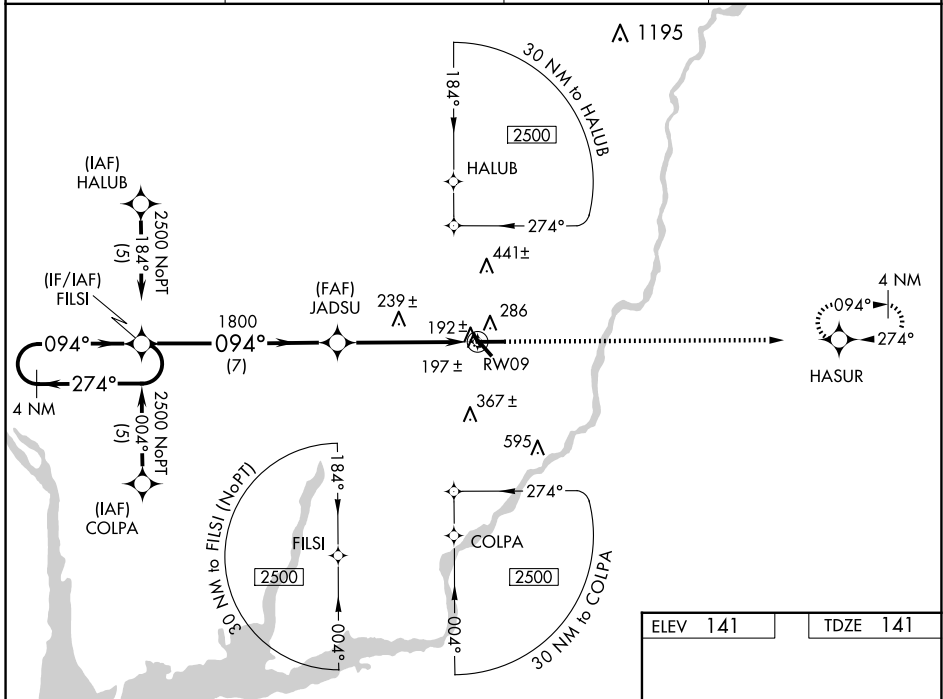
# RNAV (GPS) RWY 9

DECATUR COUNTY INDUSTRIAL AIR PARK (BGE)

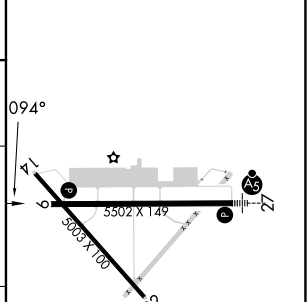
**⚠** For uncompensated Baro-VNAV systems, LNAV/VNAV NA below -15°C (5°F) or above 48°C (118°F).  
**⚠** DME/DME RNP-0.3 NA. Visibility reduction by helicopters NA. VDP and Baro-VNAV NA when using Tallahassee Intl altimeter setting. When local altimeter setting not received, use Tallahassee Intl altimeter setting and increase LPV DA to 522 feet and LNAV/VNAV DA to 562 feet; increase all MDAs 100 feet and increase LPV all Cats, LNAV/VNAV all Cats and LNAV Cat C, D visibility 1/4 SM and Circling Cat C, D visibility 1/2 SM.

**MISSED APPROACH:**  
Climb to 2600 direct HASUR and hold.

AWOS-3PT <b>121.125</b>	TALLAHASSEE APP CON* <b>128.7 254.3</b>	CLNC DEL <b>124.775 335.65</b>	UNICOM <b>122.975</b> (CTAF)
----------------------------	--	-----------------------------------	---------------------------------



ELEV <b>141</b>	TDZE <b>141</b>
-----------------	-----------------



CATEGORY	A	B	C	D
LPV DA	427-1 286 (300-1)			
LNAV/VNAV DA	467-1¼ 326 (400-1¼)			
LNAV MDA	540-1 399 (400-1)		540-1¼ 399 (400-1¼)	
CIRCLING	600-1 459 (500-1)		800-1¾ 659 (700-1¾) 860-2¼ 719 (800-2¼)	

HIRL Rwy 9-27

SE-4, 16 APR 2026 to 14 MAY 2026

SE-4, 16 APR 2026 to 14 MAY 2026